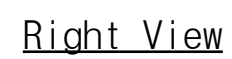
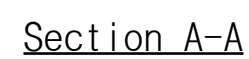


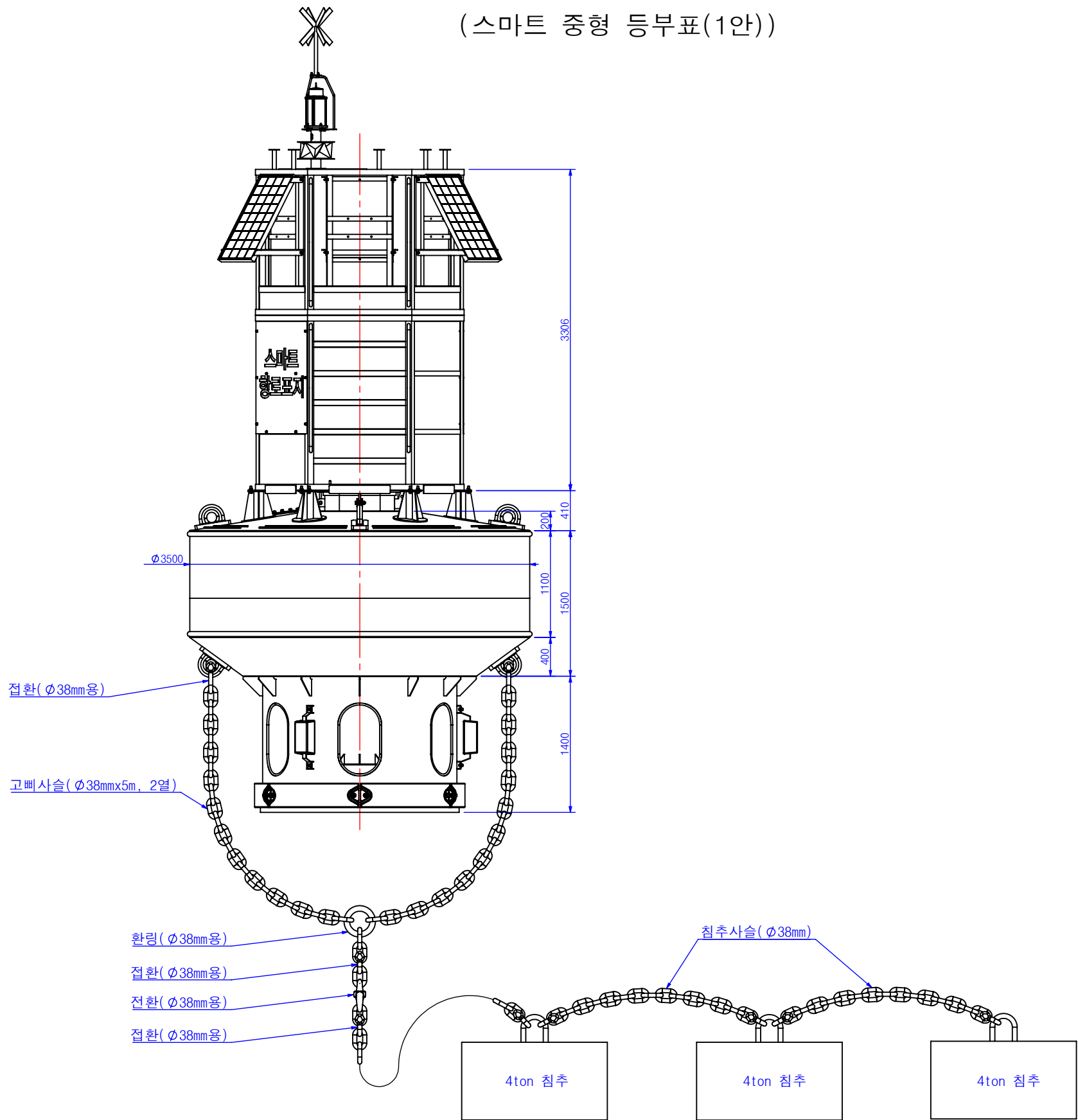
(스마트 중형 등부표(1안))

ISO View

설계일자	축척	용지	모델명	도면명	도면번호
22.11	1:60	A3	-	스마트 중형 등부표(1안)	0

등부표 상세도

(스마트 중형 등부표(1안))



설계일자	축척	용지	모델명	도면명	도면번호
22.11	1:50	A3	-	스마트 중형 등부표(1안) 계류라인	0-1

< Mast 부재목록표 >

(스마트 중형 등부표)

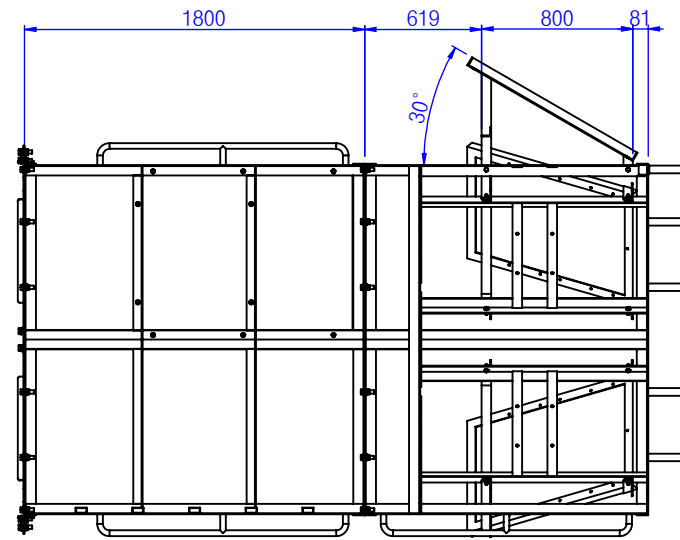
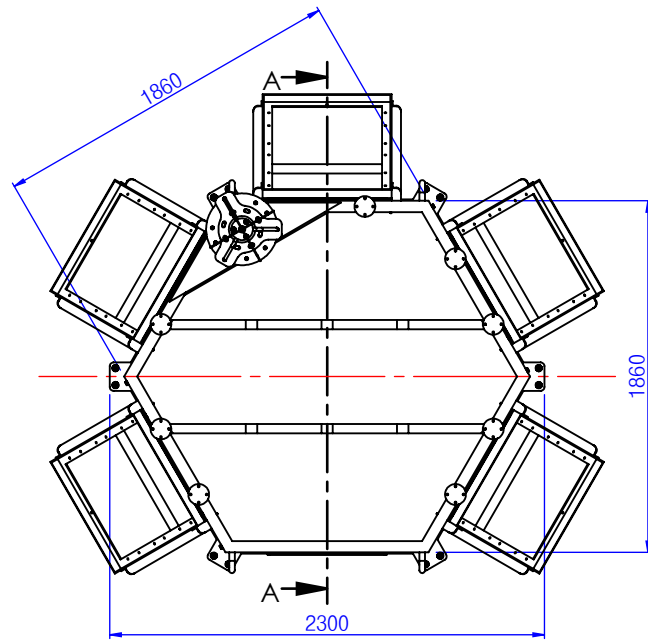
부재 번호	명칭 (Description)	재질 (Material)	규격 (Size)	수량 (Q'ty)	중량(kg) (Weight)	비고 (Remark)
1-01	특수표지 두표	STS304	388.91x388.91x699.45	1	5.267	
1-02	두표 지지대	STS304	351.65x396.77x555	1	5.857	
1-03	레이더 리플렉터 및 등명기 지지대	SS275	Ø380x404	1	10.741	
1-04	레이더 리플렉터	AL6061	359.04x347.66, 2t	1	1.831	10방향
1-05	센서 마운트 지지대	AL6061	Ø110x205	8	2.953	
1-06	Upper Modular Mast	AL6061	2147.74x1860	1	136.578	
1-07	태양전지(120Wp)	-	660x990x35	5	37.9	
1-08	태양전지 거치대	AL6061	782x1045.84x504.46	5	41.49	
1-09	Modular Mast 안전 손잡이	AL6061	Ø30x1557.08, 3t	6	6.373	
1-10	Lower Modular Mast	AL6061	2147.74x1800	1	62.817	
1-11	표지판	AL6061	1050x1155, 6t	2	39.012	
1-12	Modular Mast 밀판	SS275	2300x2052.22, 6t	1	42.869	
Mast 총 중량					393.688	

부재 번호	명칭 (Description)	재질 (Material)	규격 (Size)	수량 (Q'ty)	중량(kg) (Weight)	비고 (Remark)
1-01a	특수표지판	STS304	FB 50x500, 5t	4	3.785	
1-01b	두표 지주	STS304	Ø34x500, 2.8t	1	1.074	
1-01c	두표 밀판	STS304	Ø115, 5t	1	0.408	
1-02a	두표 설치판	STS304	Ø115, 5t	1	0.397	
1-02b	지지대	STS304	RB Ø16x635.15	3	3.14	
1-02c	밀판	STS304	396.77x351.65, 5t	1	2.32	
1-03a	등명기 취부판	SS275	Ø250, 4t	1	1.209	
1-03b	리플렉터 중앙관	SS275	Ø101.6x400, 2.3t	1	2.201	
1-03c	리플렉터 결합판	SS275	Ø380, 4t	2	6.564	
1-03d	취부대 밀판	SS275	Ø200, 4t	1	0.767	
1-04a	1방향 리플렉터	AL6061	200x230, 2t	10	1.88	
1-05a	센서 마운트 취부판	AL6061	Ø110, 5t	8	1	
1-05b	지주	AL6061	Ø40x200, 4t	8	1.954	
1-06a	등명기 및 리플렉터 취부대 설치판	AL6061	1047.28x302.32, 6t	1	2.452	
1-06b	상부 외곽 수평보강재	AL6061	A60x60x1073.87, 6t	6	11.679	
1-06c	등명기 및 리플렉터 취부대 설치판 수평보강재-1	AL6061	A50x50x1097.92, 6t	1	1.419	
1-06d	등명기 및 리플렉터 취부대 설치판 수평보강재-2	AL6061	A50x50x241.66, 6t	2	0.538	
1-06e	외곽 수직보강재	AL6061	120x1488, 6t	6	16.855	120° 절곡
1-06f	내부 수직보강재	AL6061	A60x60x1194, 6t	10	22.051	
1-06g	장비 설치대	AL6061	FB 50x668, 6t	10	5.361	
1-06h	외곽발판	AL6061	(1054.24+1076.07)x613	2	27.968	
1-06i	중심발판	AL6061	(1819.81+2108.48)x500	1	15.91	
1-06j	발판 외곽 수평보강재	AL6061	A60x60x1060.02, 6t	6	10.923	
1-06k	발판 내부 수평보강재	AL6061	A60x60x1836, 6t	3	9.857	
1-06l	하부 외곽 수평보강재	AL6061	A60x60x1073.87, 6t	6	11.679	
1-08a	외곽틀	AL6061	A50x50x1694, 6t	5	24.812	
1-08b	상부(좌) 브라켓	AL6061	A50x50x151.4, 6t	5	0.951	
1-08c	상부(우) 브라켓	AL6061	A50x50x151.4, 6t	5	0.951	
1-08d	하부(좌) 브라켓	AL6061	A50x50x584.41, 6t	5	4.242	
1-08e	하부(우) 브라켓	AL6061	A50x50x584.41, 6t	5	4.242	
1-08f	하부 브라켓 수평보강재	AL6061	A50x50x682, 6t	5	5.193	
1-10a	상부 외곽 수평보강재	AL6061	A60x60x1073.87, 6t	6	11.679	
1-10b	외곽 수직보강재	AL6061	120x1788, 6t	6	20.22	120° 절곡
1-10c	중간 수평보강재	AL6061	A60x60x1085.42, 6t	8	12.06	
1-10d	사다리 발판	AL6061	RP 60x30x1094.66, 3t	5	7.302	
1-10e	하부 외곽 수평보강재	AL6061	A60x60x1073.87, 6t	6	11.679	
1-12a	밀판 수직보강재	SS275	86x630, 6t	6	15.287	
1-12b	밀판	SS275	2300x2052.22, 6t	1	27.582	

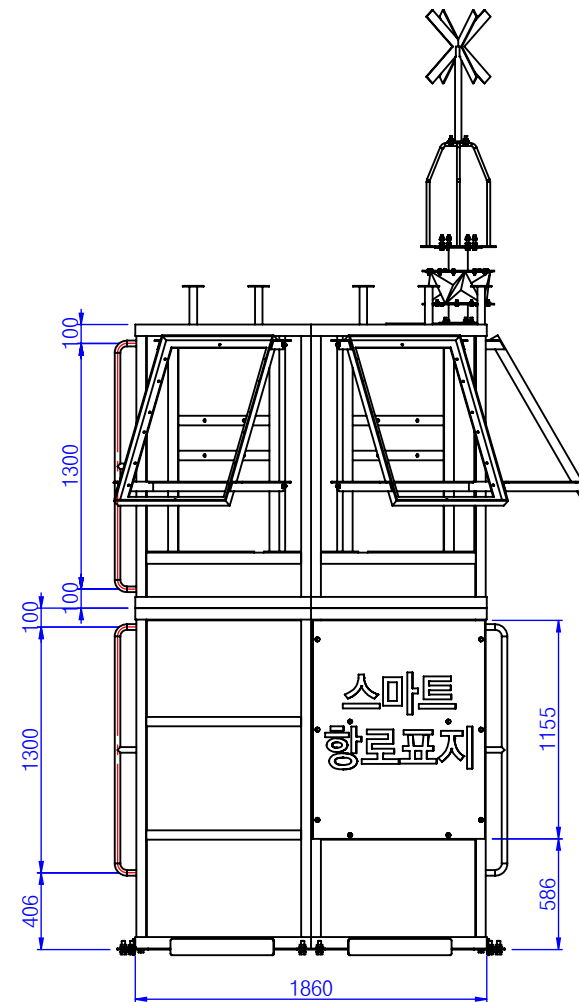
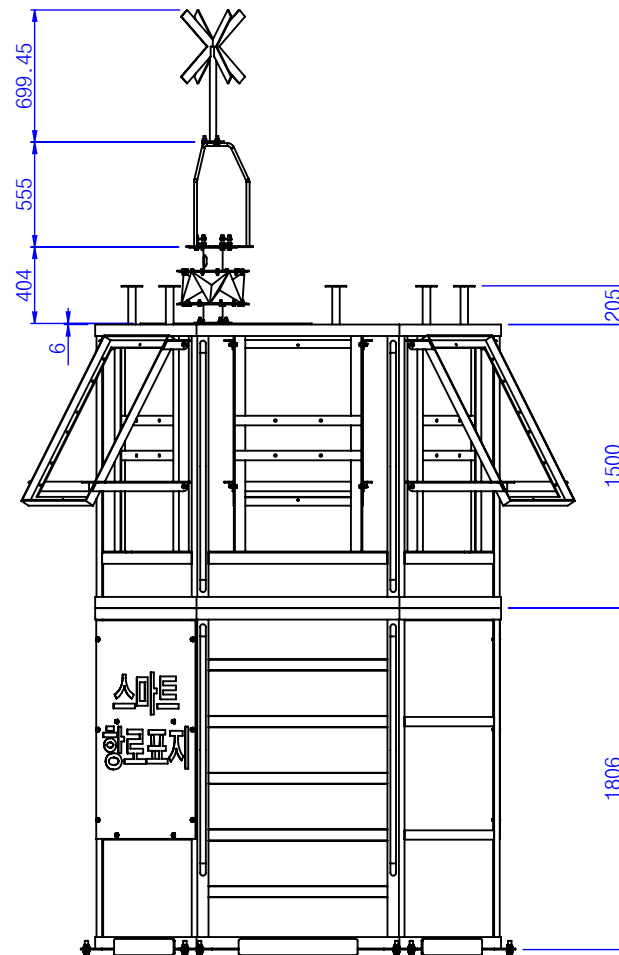
	설계일자	축척	용지	모델명	도면명	도면번호
	22.11	1:40	A3	-	스마트 중형 등부표 Mast 부재목록표	

등부표 상세도

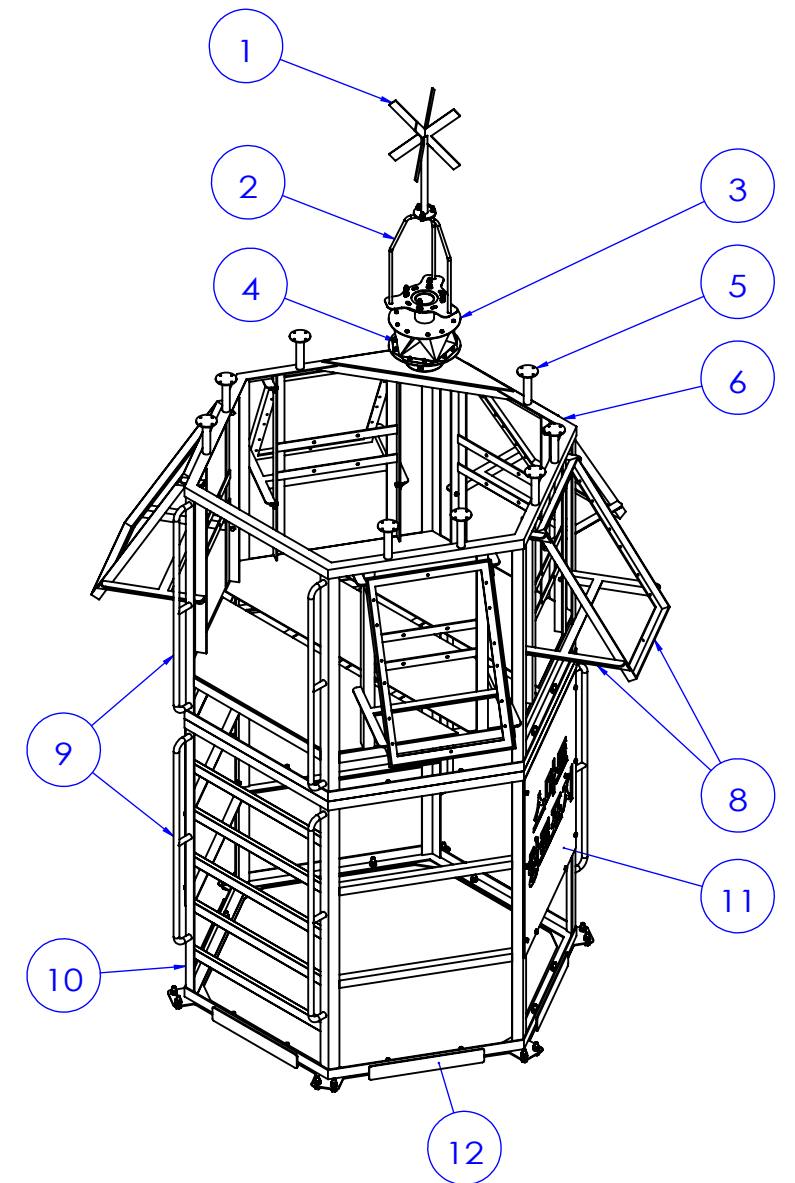
(스마트 중형 등부표)



단면 A-A



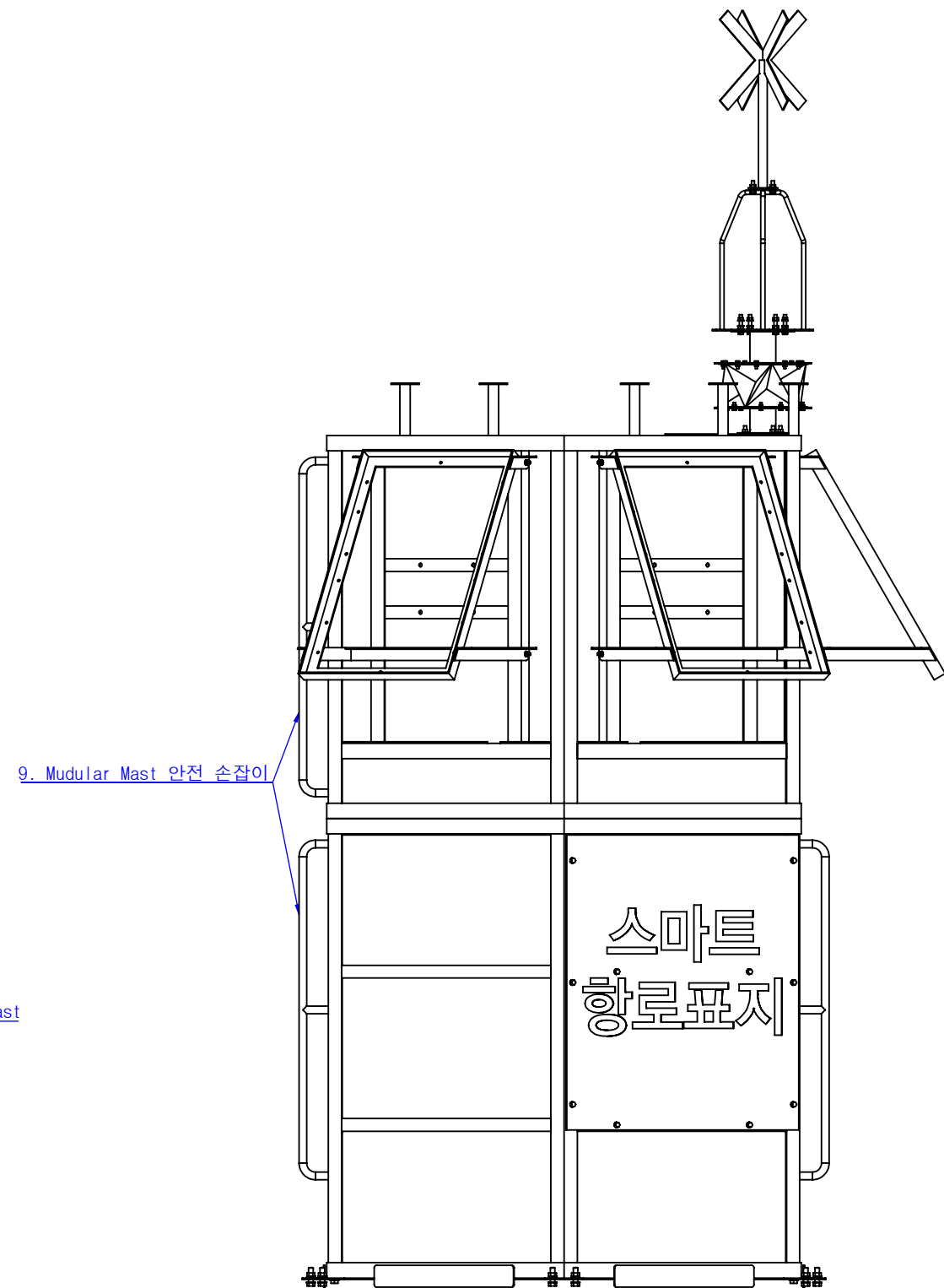
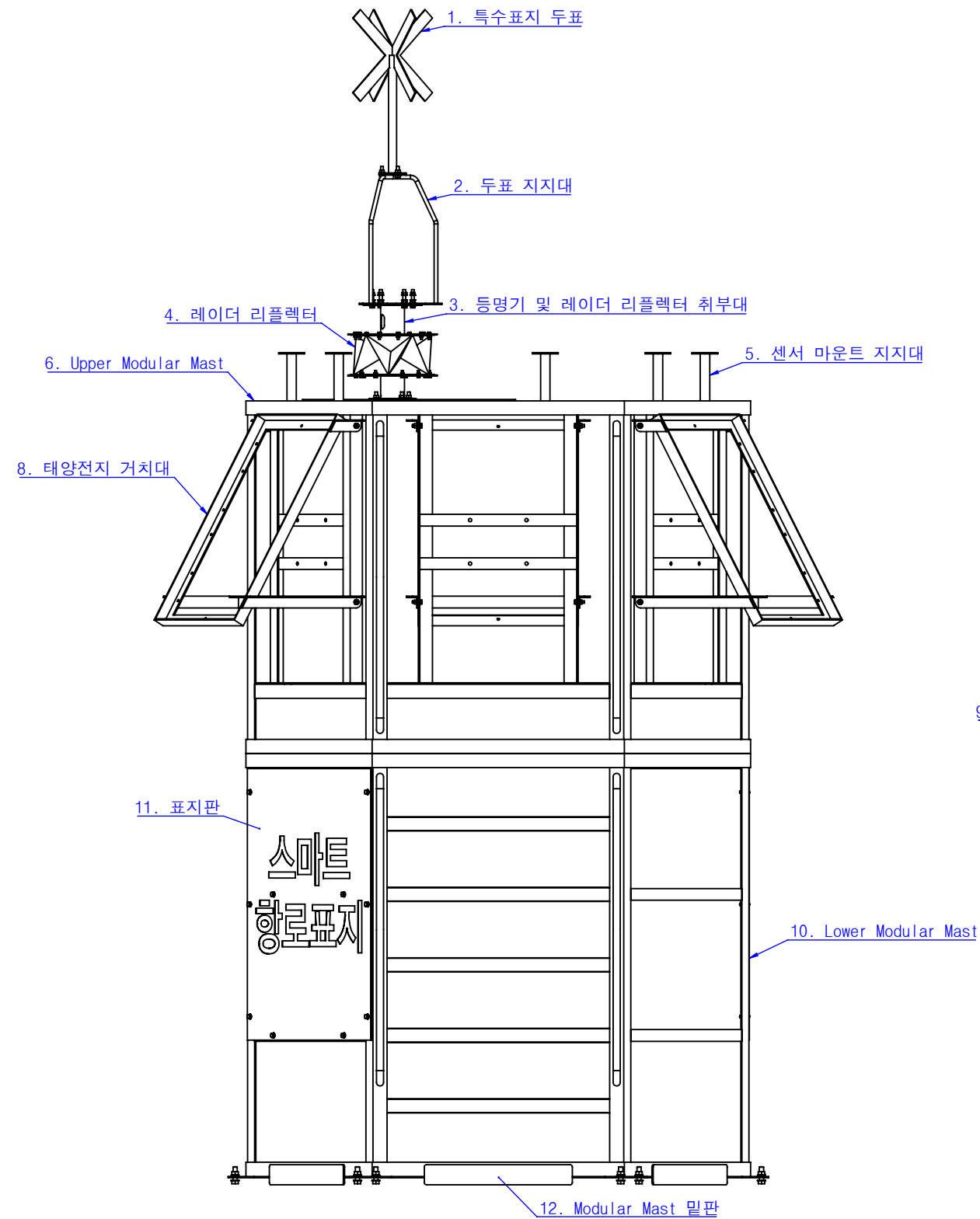
NO	DESCRIPTION	MATERIAL	Q'TY
1-01	특수표지 두표	STS304	1set
1-02	두표 지지대	STS304	1set
1-03	레이더 리플렉터 및 등명기 지지대	SS275	1set
1-04	레이더 리플렉터	AL6061	1set
1-05	센서 마운트 지지대	AL6061	8ea
1-06	Upper Modular Mast	AL6061	1set
1-07	태양전지 (120Wp)	-	5ea
1-08	태양전지 거치대	AL6061	5set
1-09	Modular Mast 안전 손잡이	AL6061	6ea
1-10	Lower Modular Mast	AL6061	1set
1-11	표지판	AL6061	2ea
1-12	Modular Mast 밑판	SS275	1set



설계일자	축척	용지	모델명	도면명	도면번호
22.11	1:40	A3	-	Mast 조립도	1

등부표 상세도

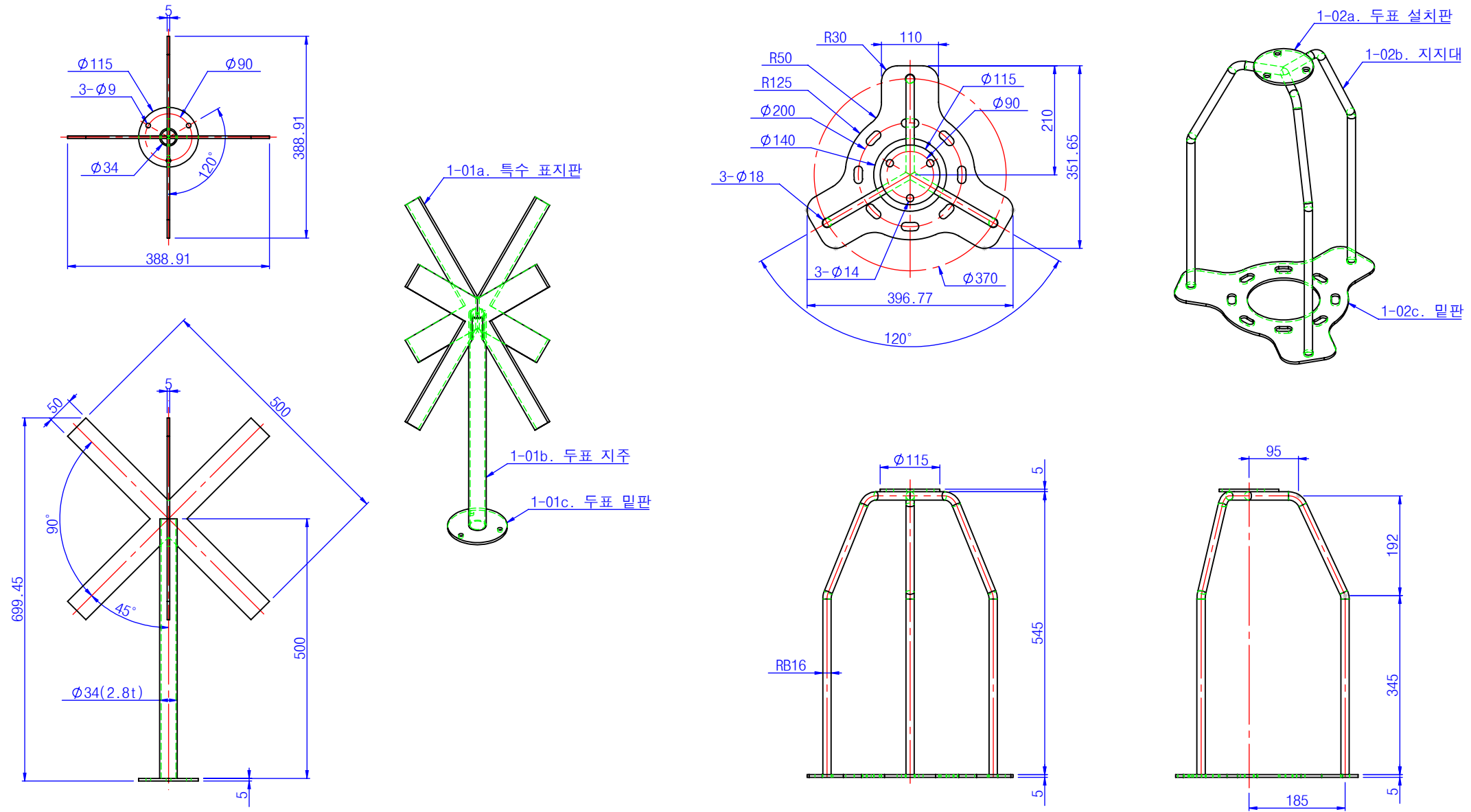
(스마트 중형 등부표)



설계일자	축척	용지	모델명	도면명	도면번호
22.11	1:25	A3	-	Mast 조립도(부품명표기)	1

등부표 상세도

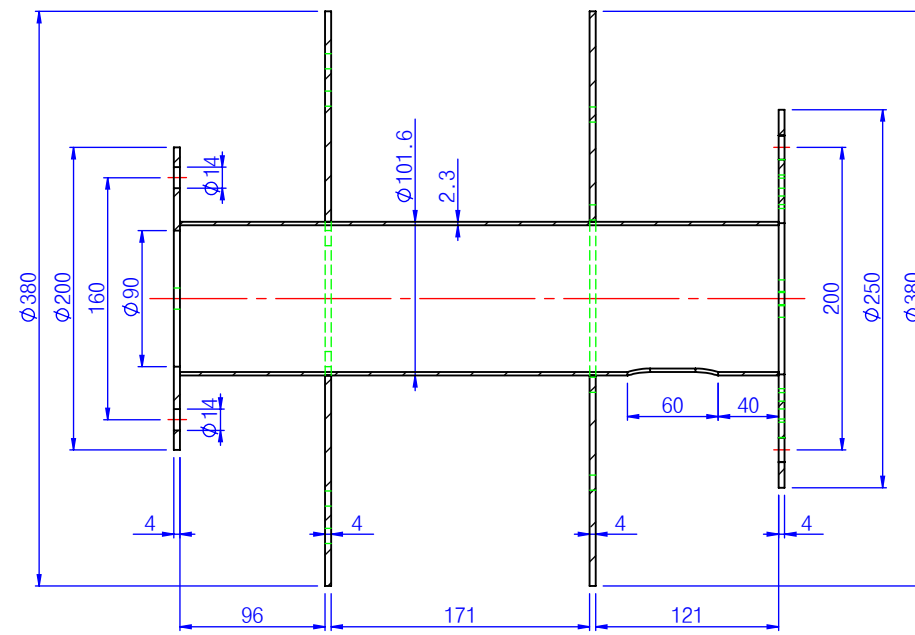
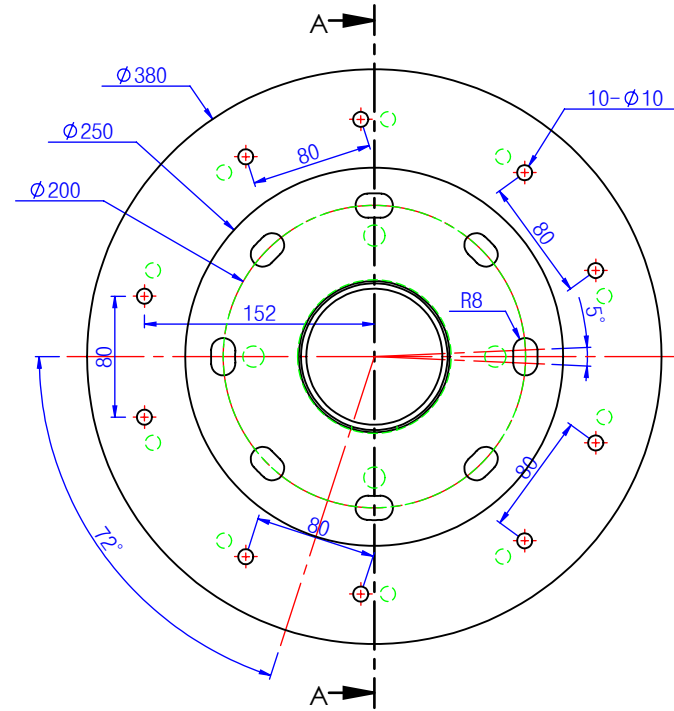
(스마트 중형 등부표)



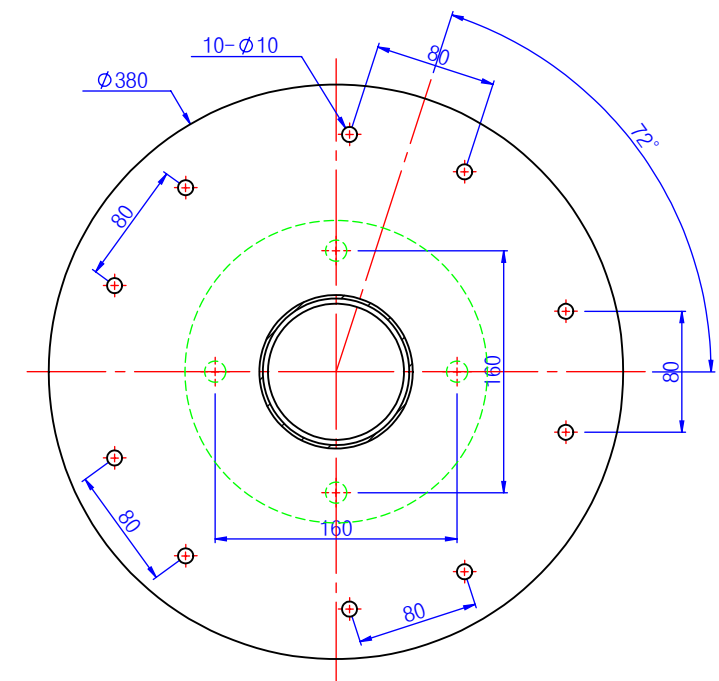
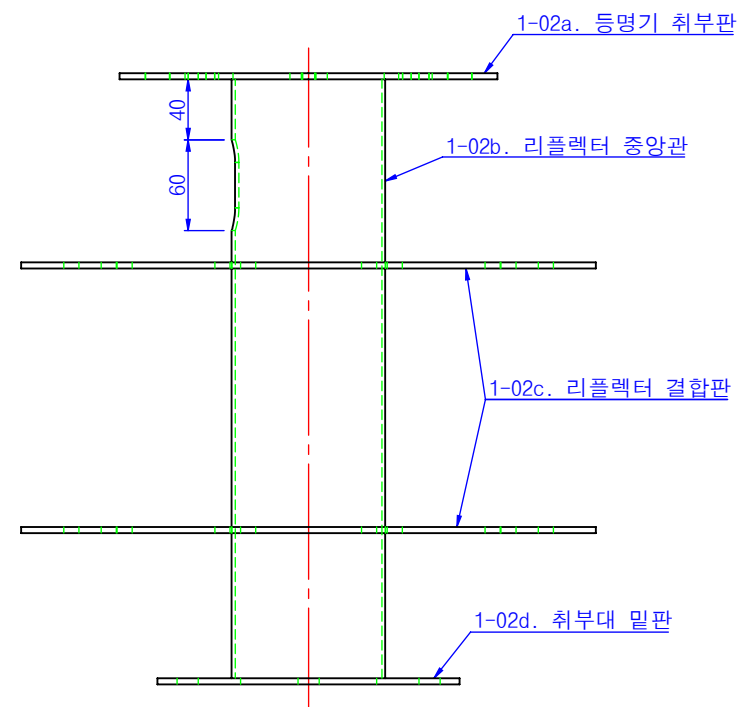
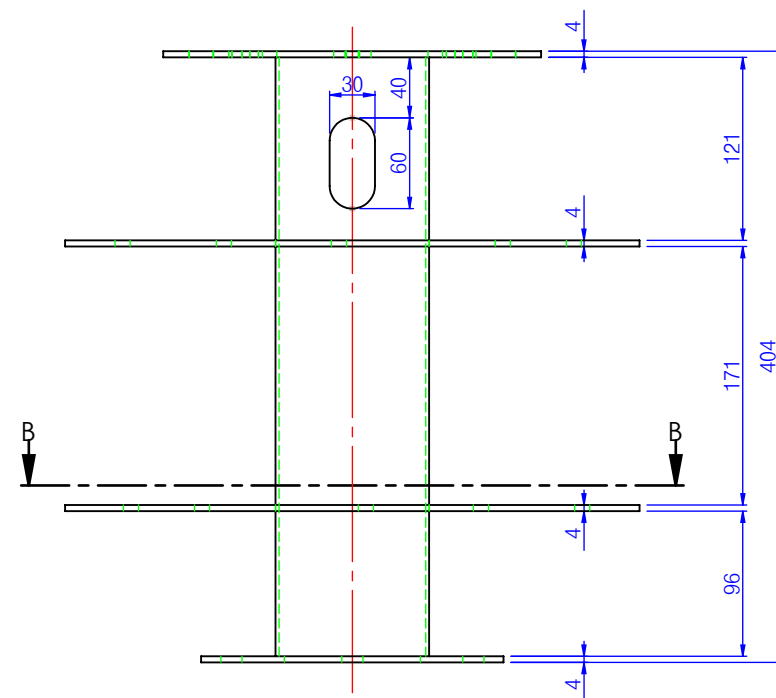
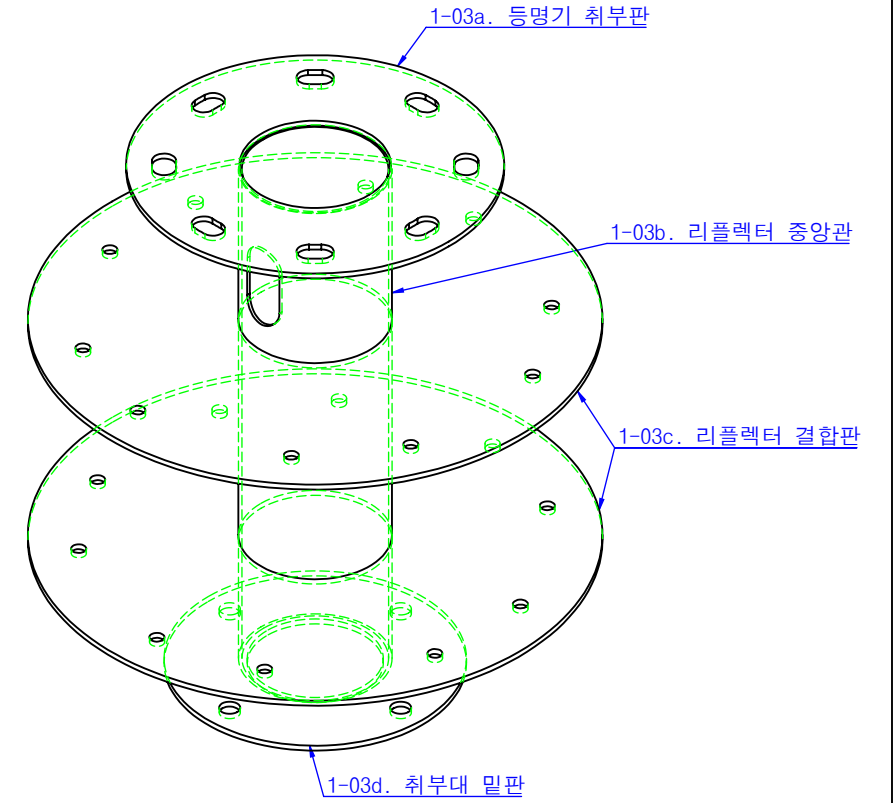
설계일자	축척	용지	모델명	도면명	도면번호
22.11	1:10	A3	-	특수표지 두표 두표 지지대	1-01 1-02

등부표 상세도

(스마트 중형 등부표)



단면 A-A

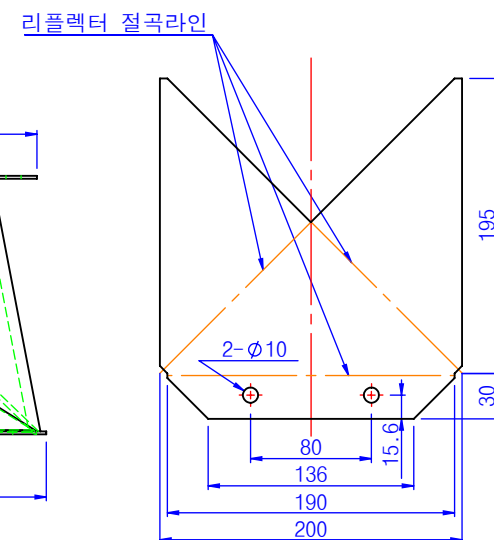
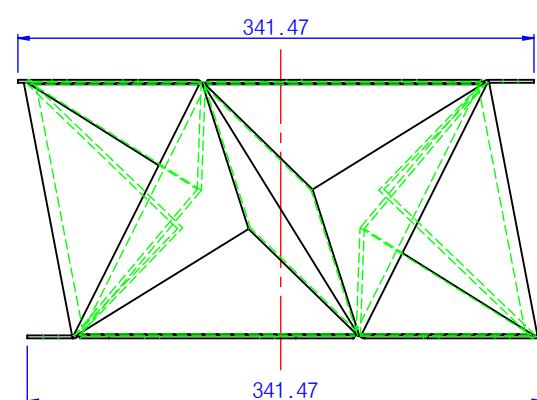
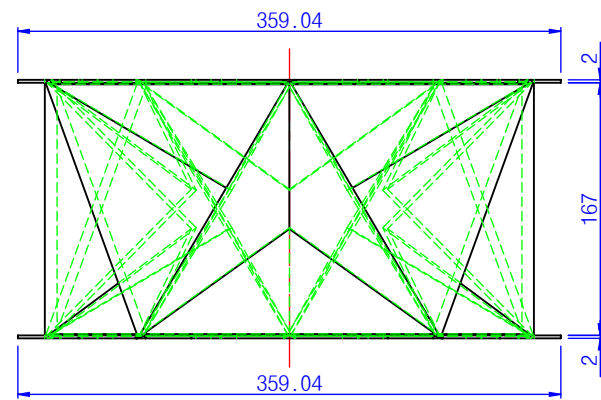
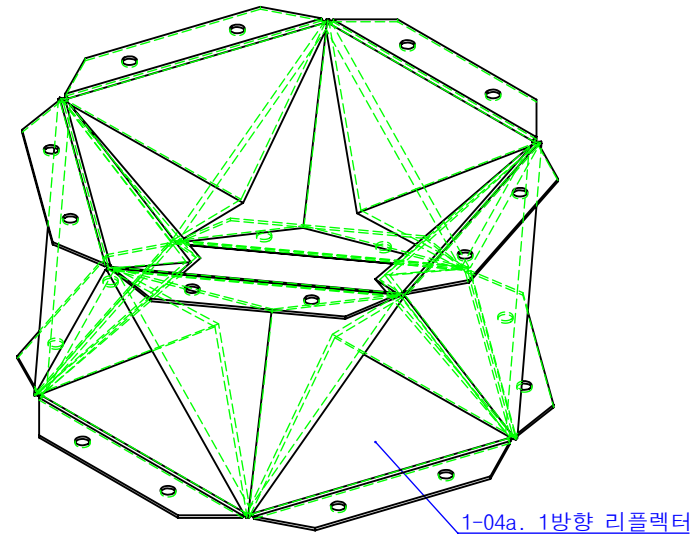
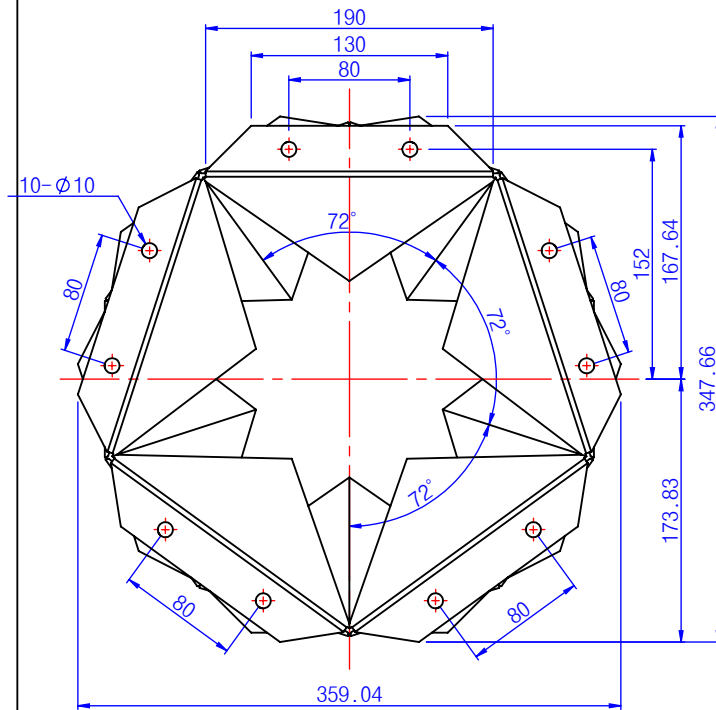


단면 B-B

설계일자	축척	용지	모델명	도면명	도면번호
22.11	1:5	A3	-	레이더 리플렉터 및 등명기 취부대	1-03

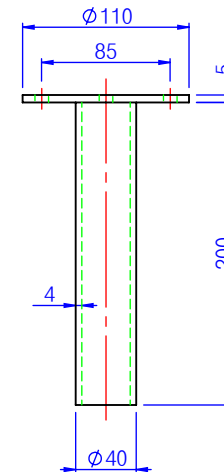
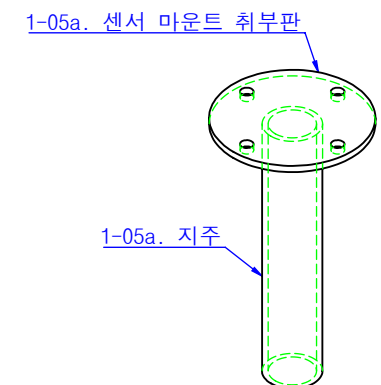
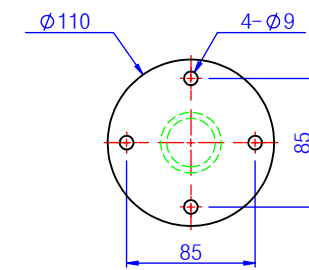
등부표 상세도

(스마트 중형 등부표)



1-04 레이더 리플렉터

<1방향 전개도>

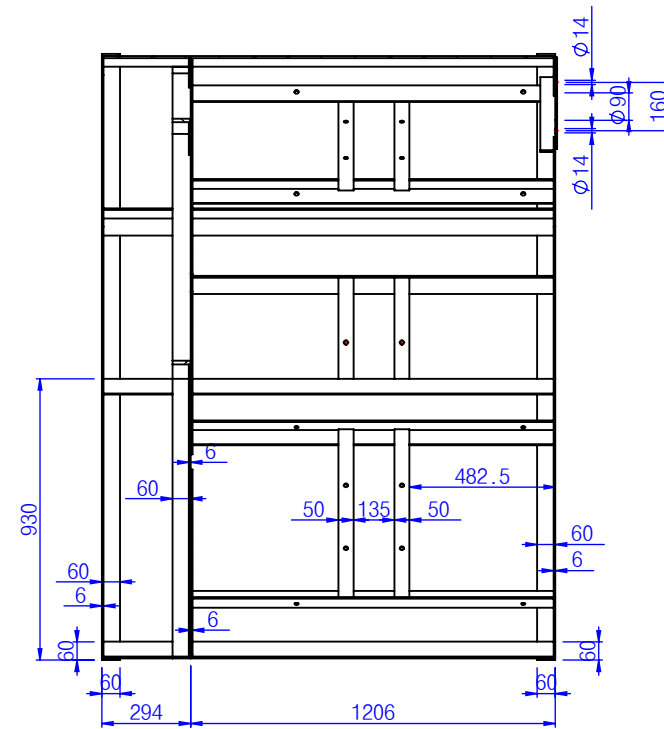
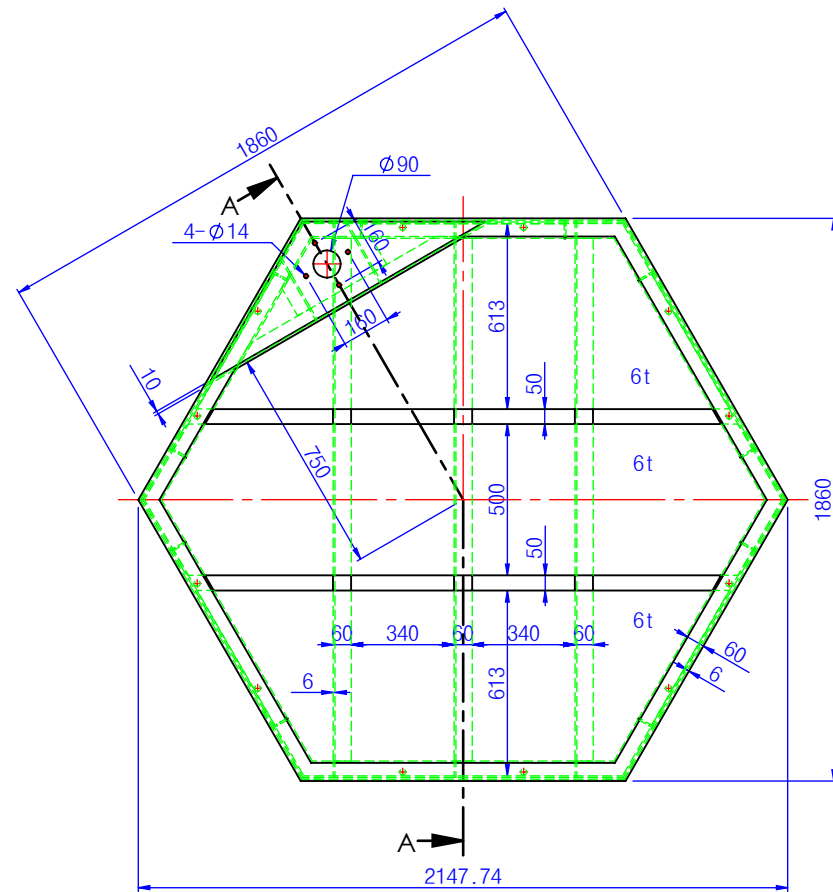


1-05 센서 마운트 지지대

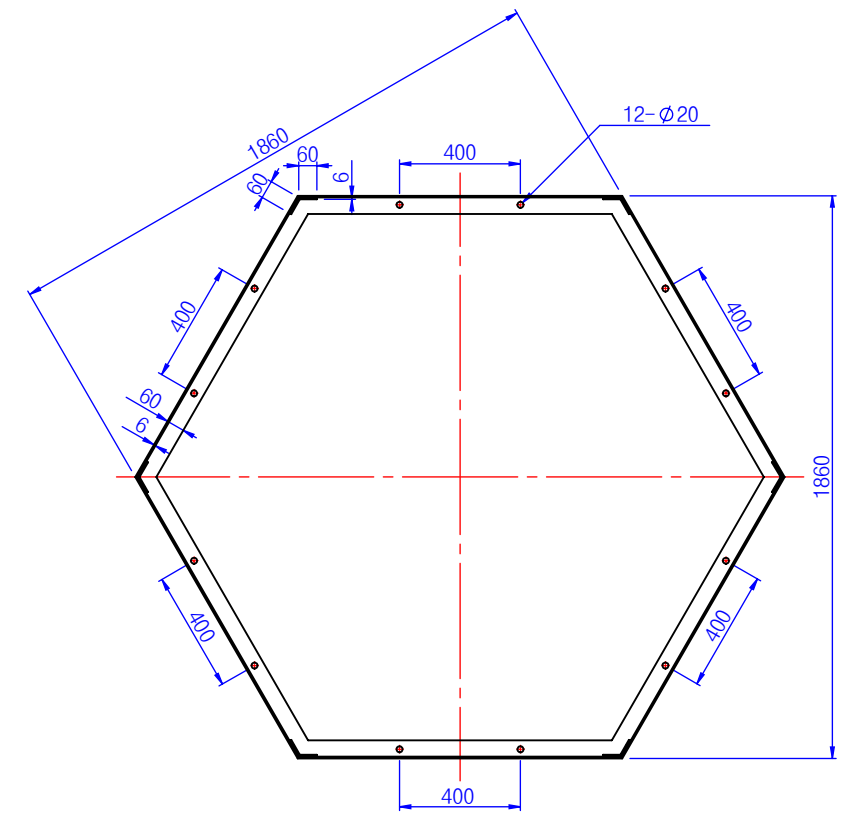
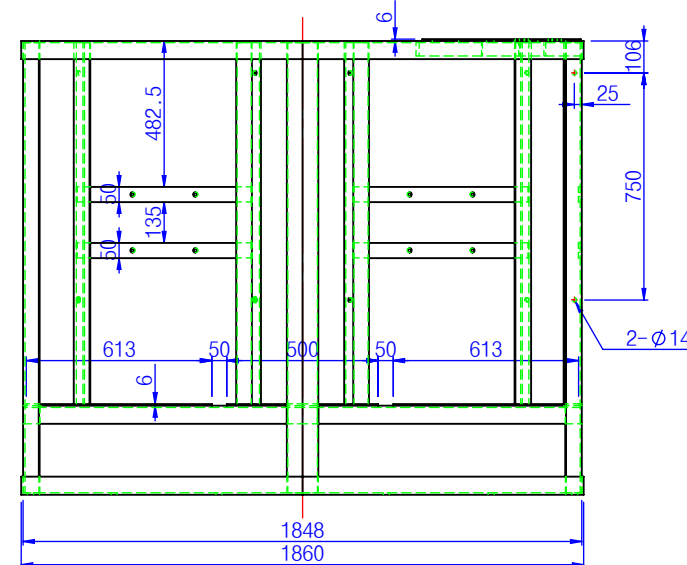
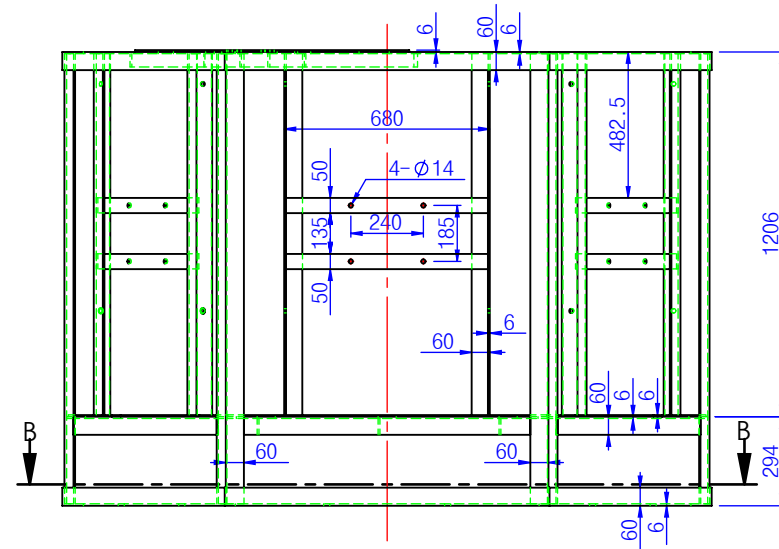
설계일자	축척	용지	모델명	도면명	도면번호
22.11	1:5	A3	-	레이더 리플렉터 센서 마운트 지지대	1-04 1-05

등부표 상세도

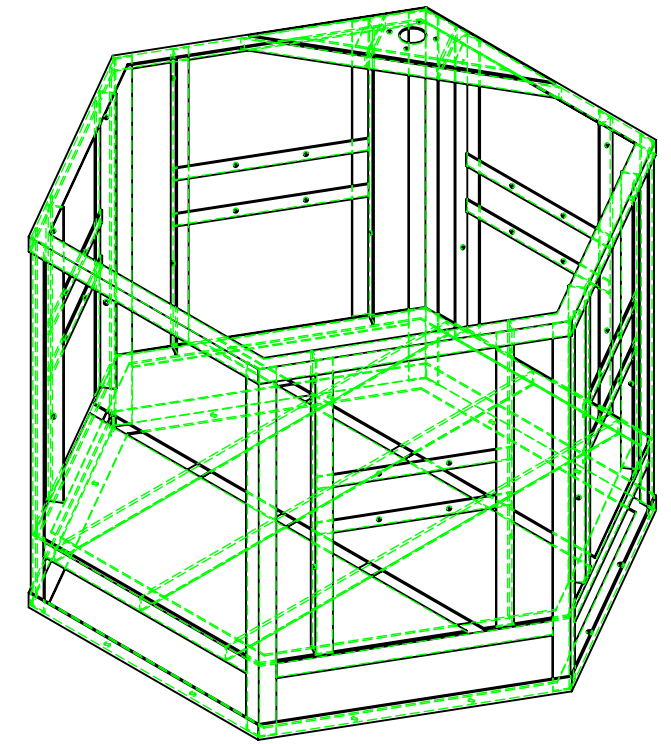
(스마트 중형 등부표)



단면 A-A



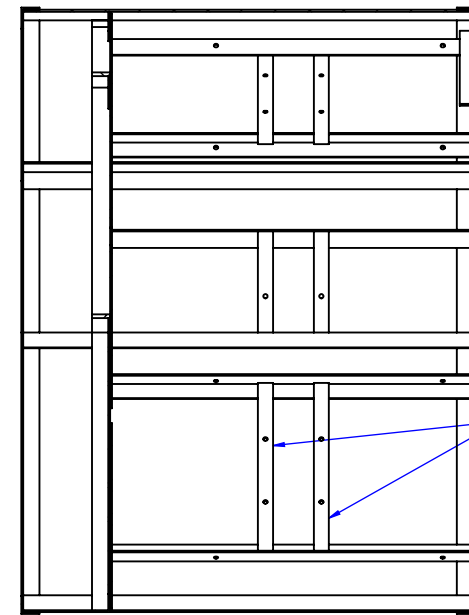
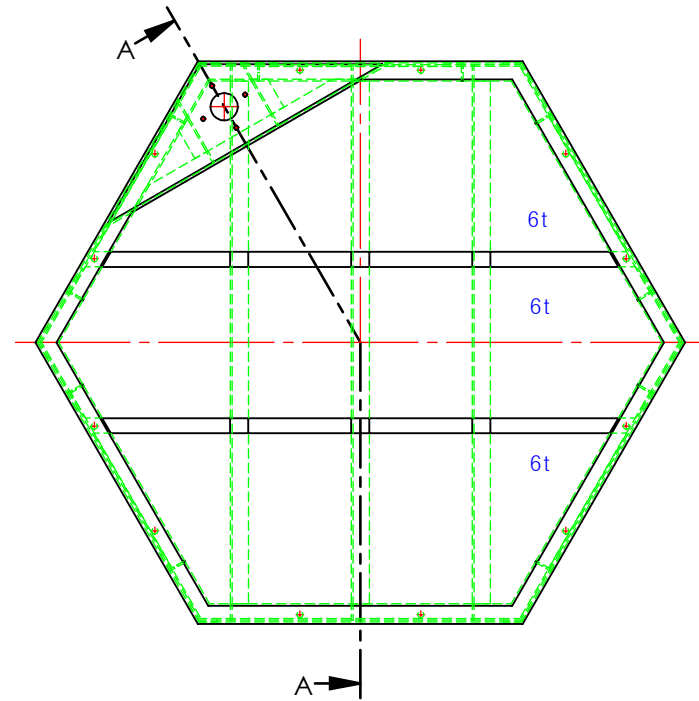
단면 B-B



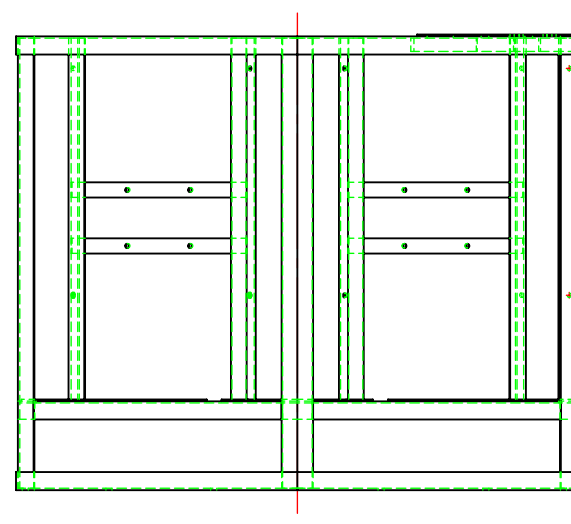
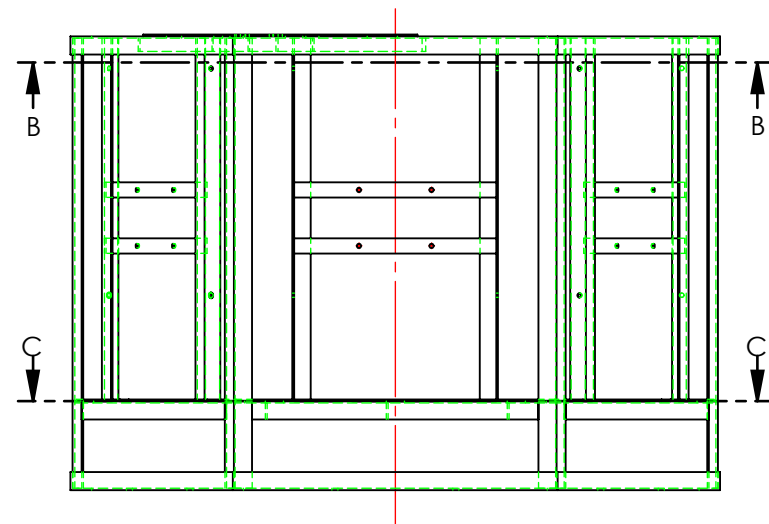
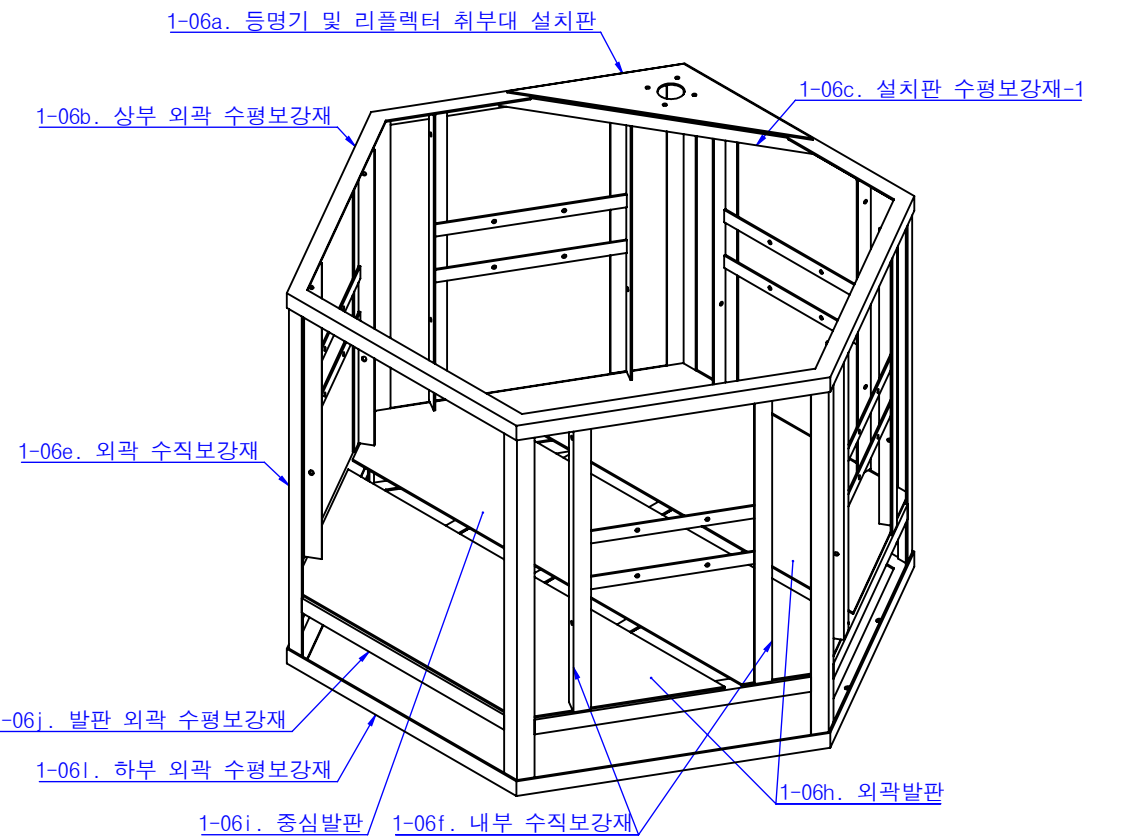
설계일자	축척	용지	모델명	도면명	도면번호
22.11	1:25	A3	-	Upper Modular Mast	1-06

등부표 상세도

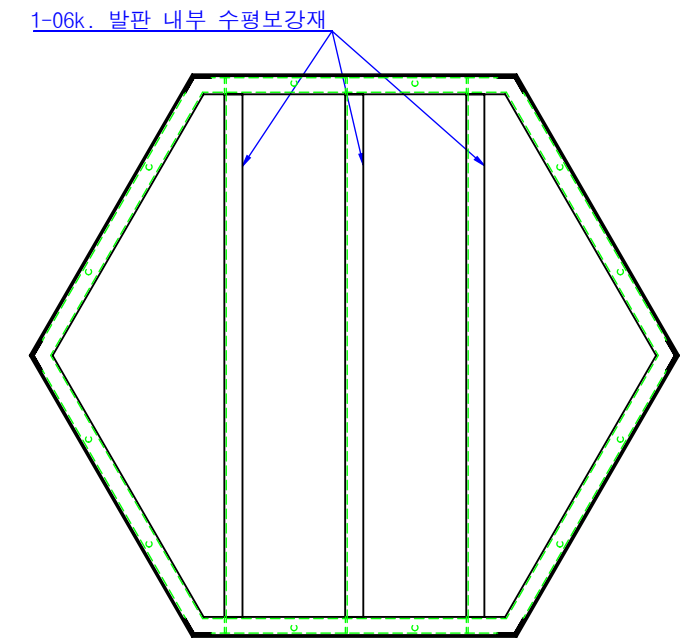
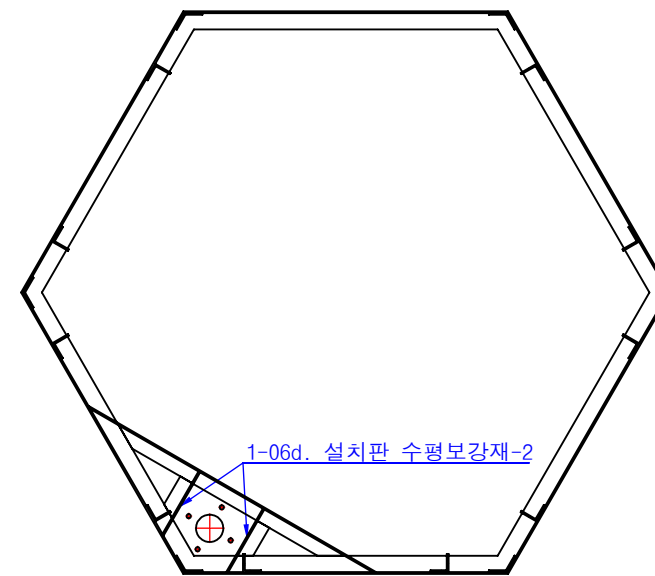
(스마트 중형 등부표)



단면 A-A



단면 B-B

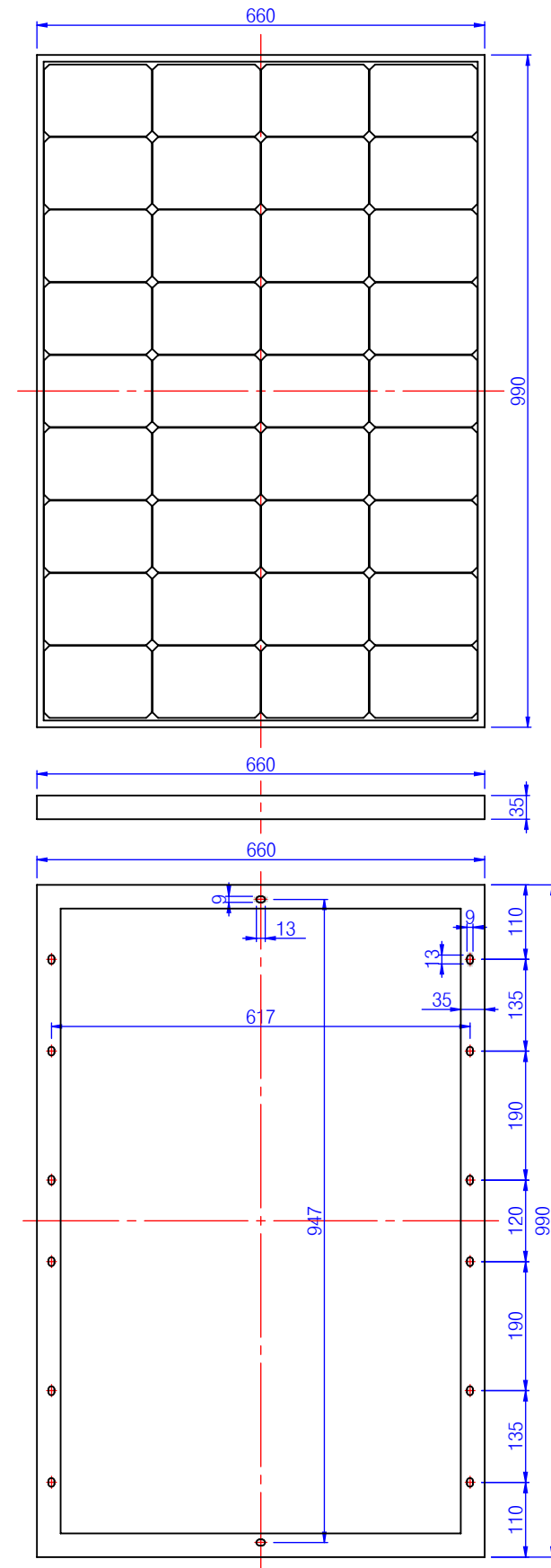


단면 C-C

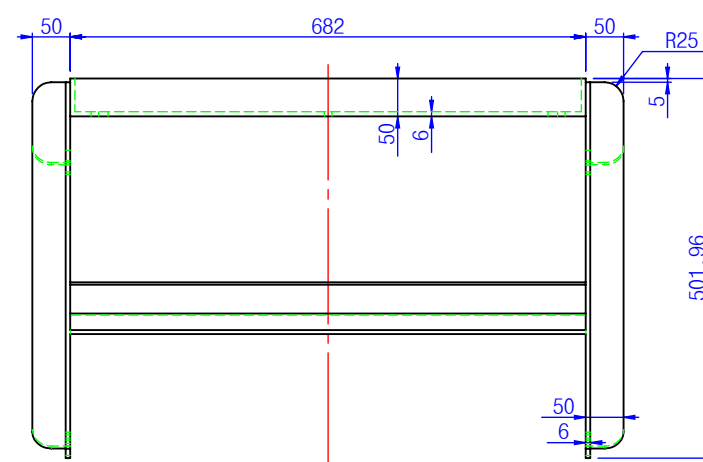
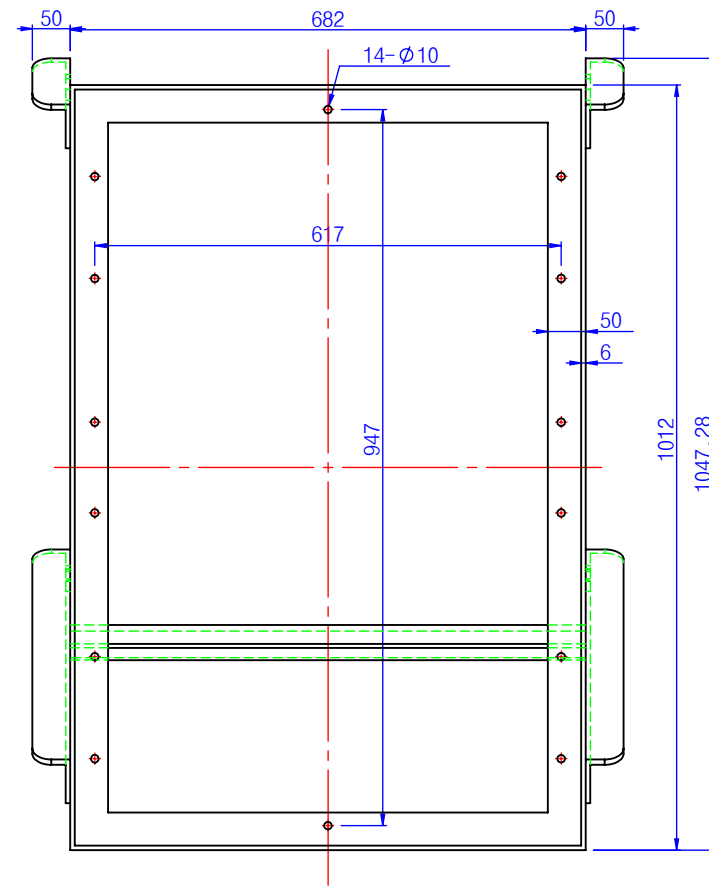
설계일자	축척	용지	모델명	도면명	도면번호
22.11	1:25	A3	-	Upper Modular Mast(부품명표기)	1-06

등부표 상세도

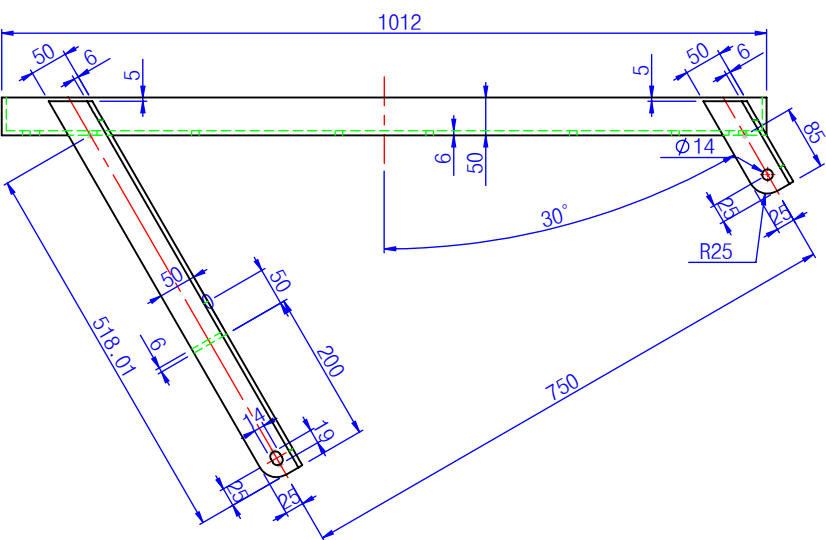
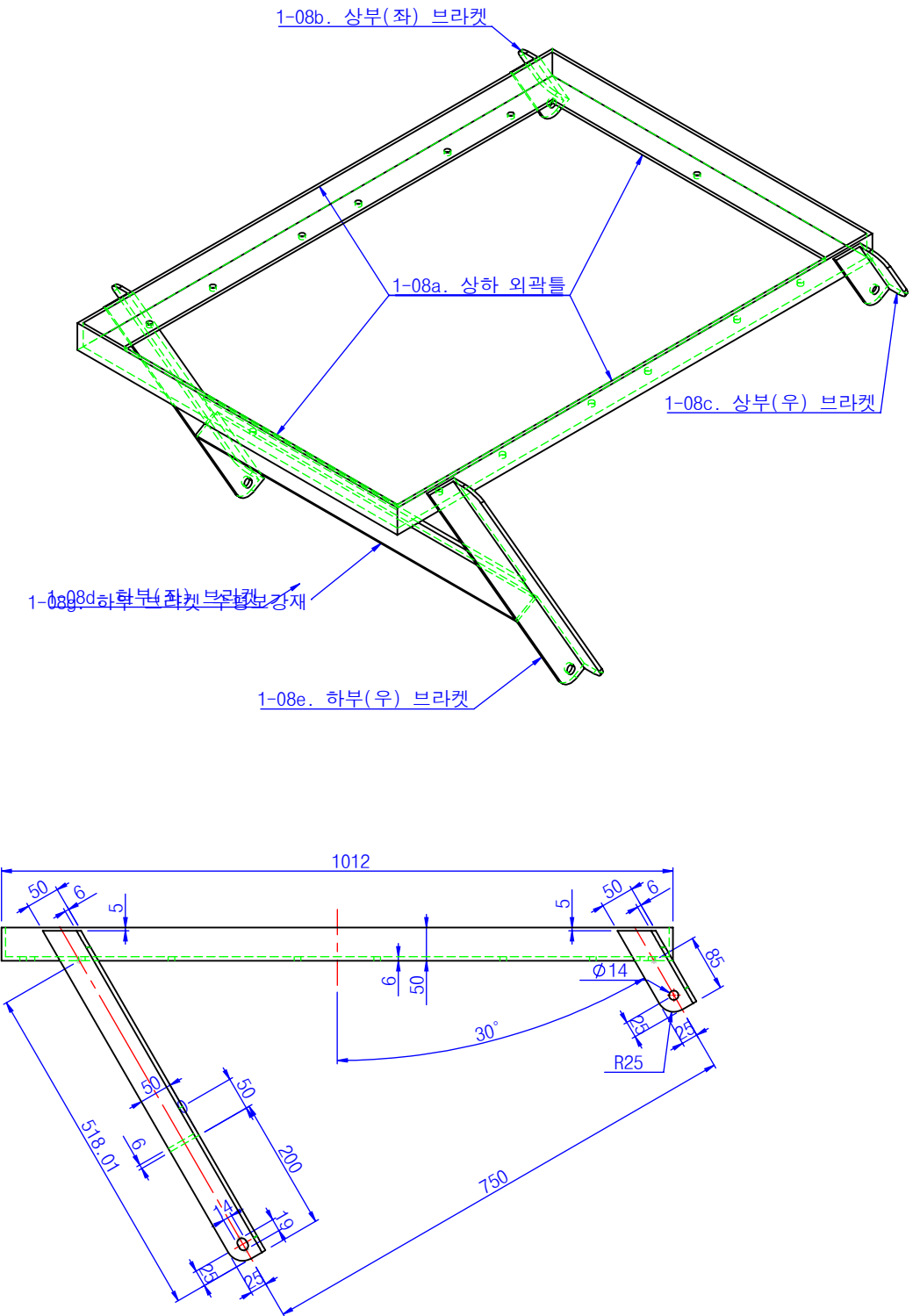
(스마트 중형 등부표)



1-07 태양전지 (120Wp)



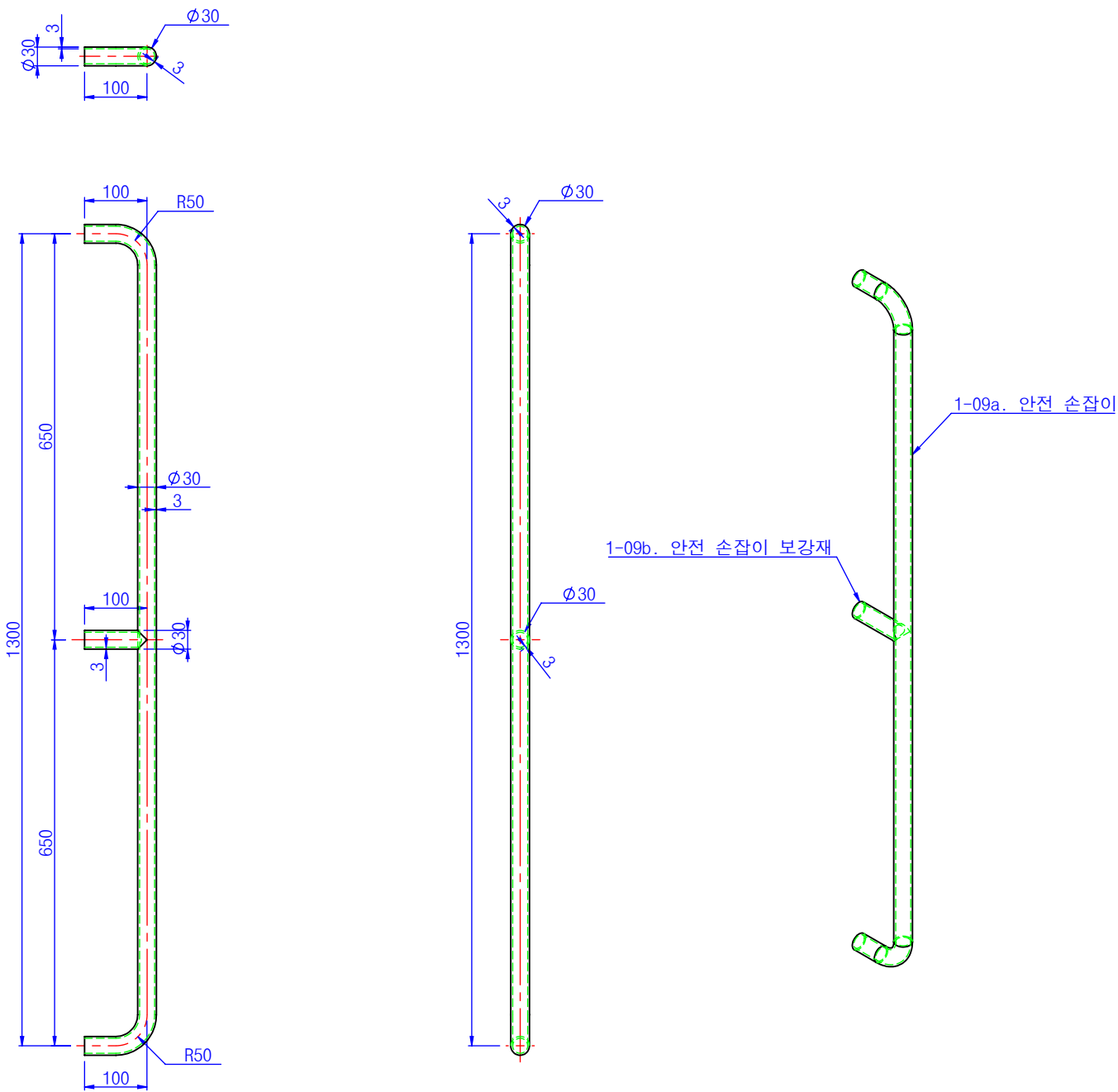
1-08 태양전지 거치대



설계일자	축척	용지	모델명	도면명	도면번호
22.11	1:10	A3	-	태양전지 (120Wp) 태양전지 거치대	1-07 1-08

등부표 상세도

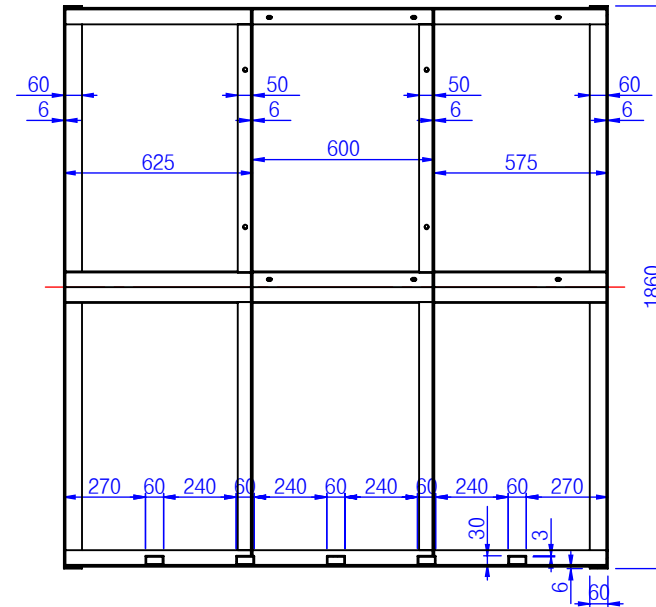
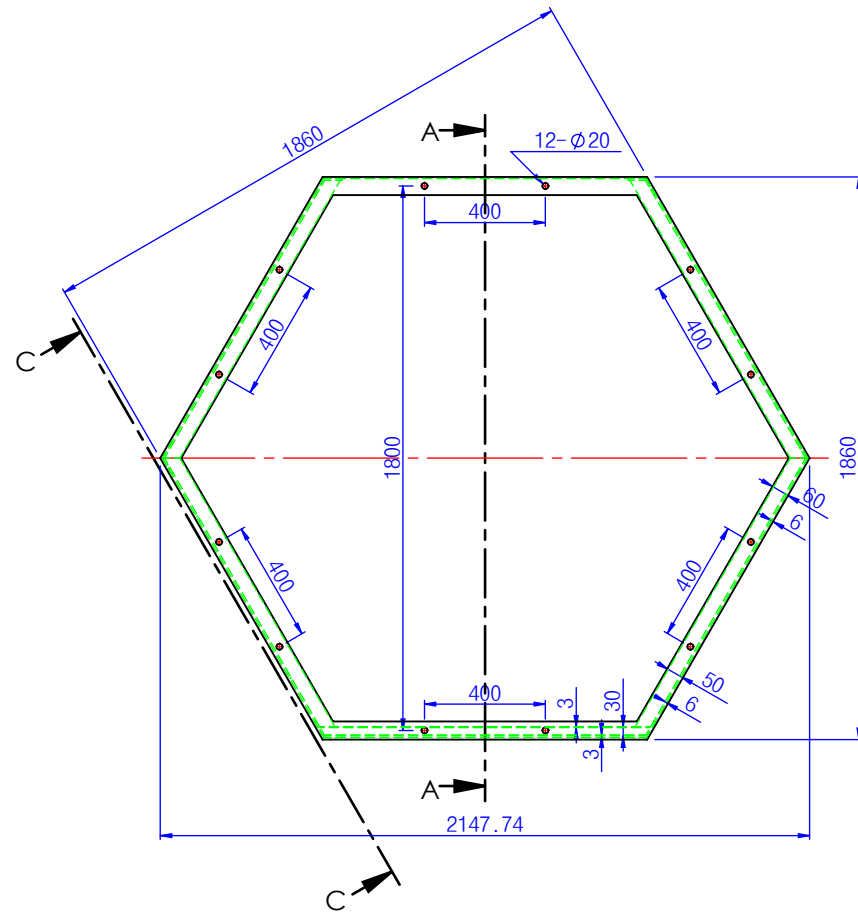
(스마트 중형 등부표)



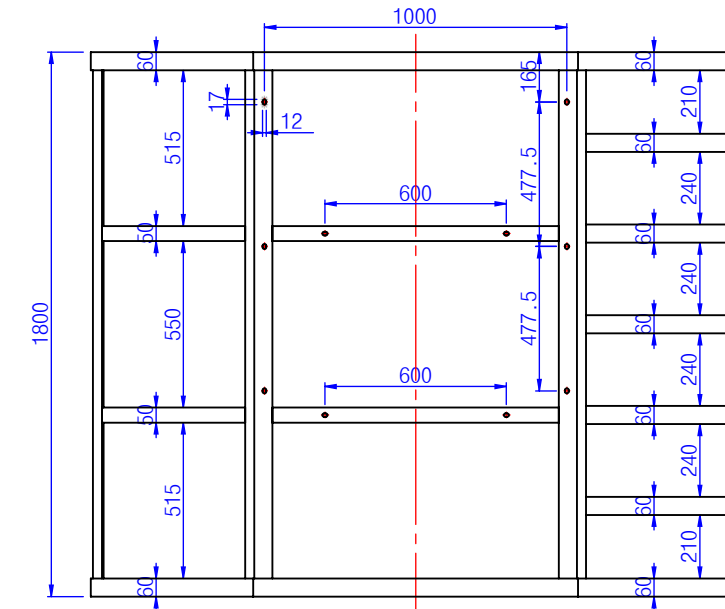
	설계일자	축척	용지	모델명	도면명	도면번호
	22.11	1:10	A3	-	Modular Mast 안전 손잡이	1-09

등부표 상세도

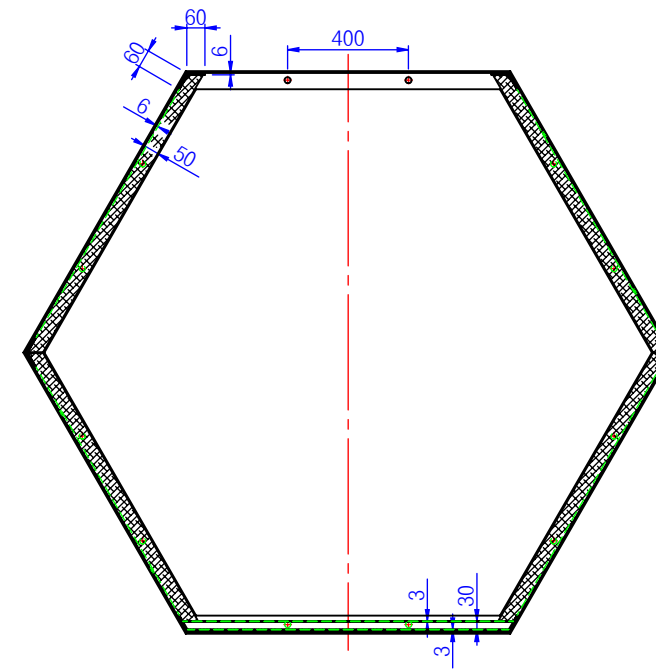
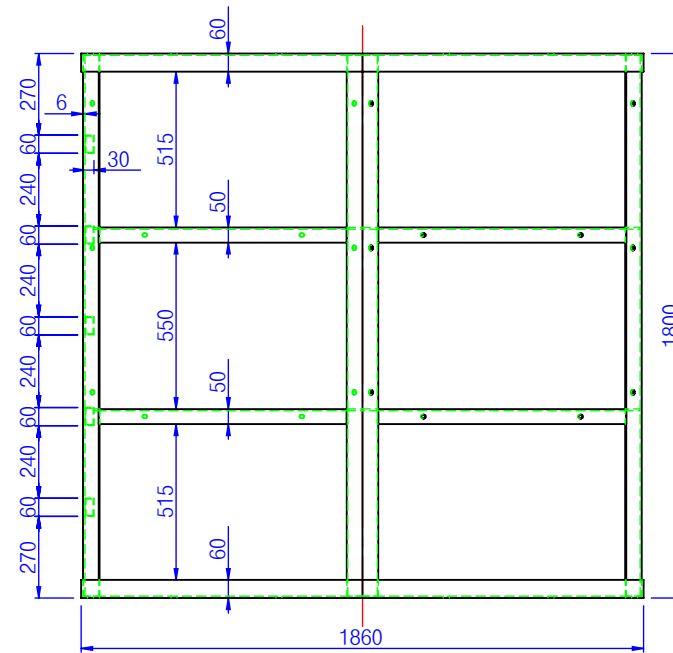
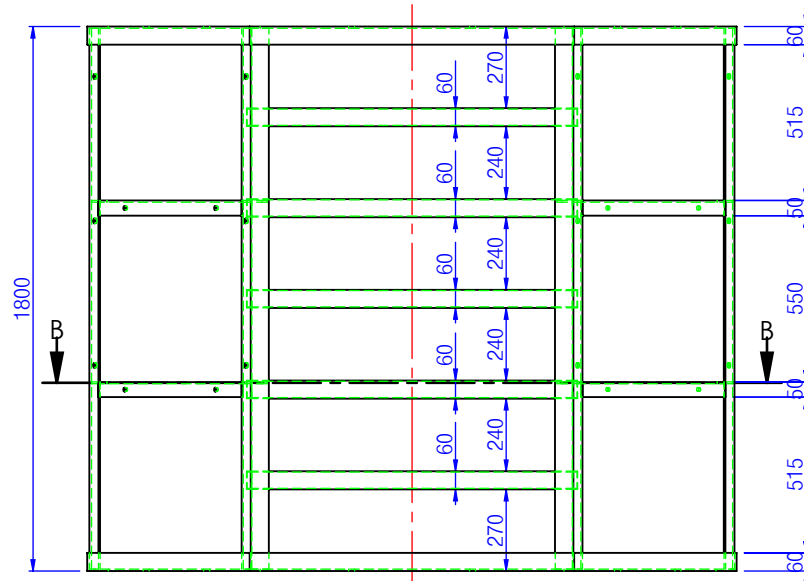
(스마트 중형 등부표)



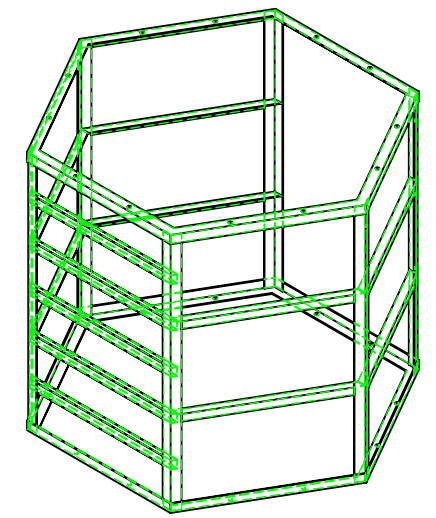
단면 A-A



단면 C-C



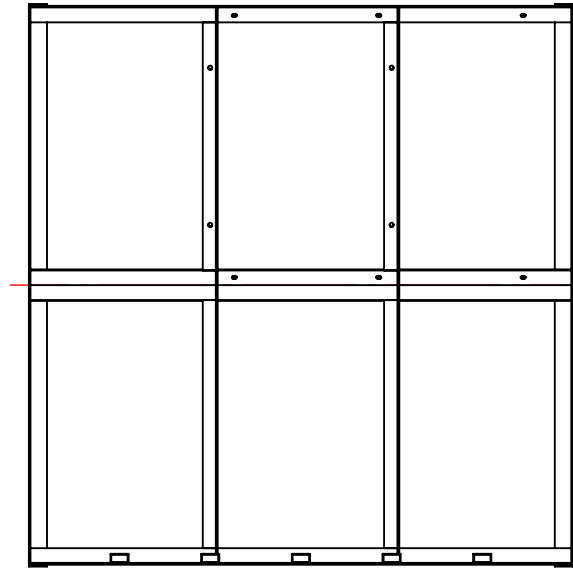
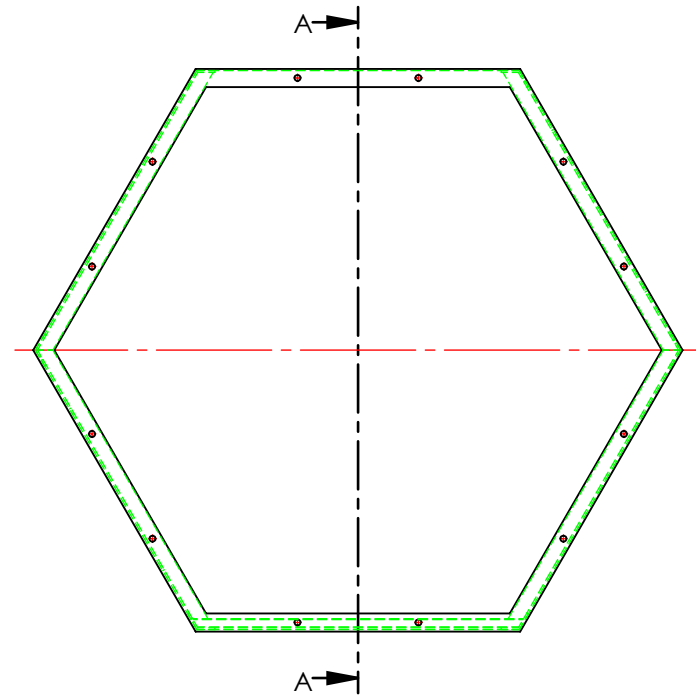
단면 B-B



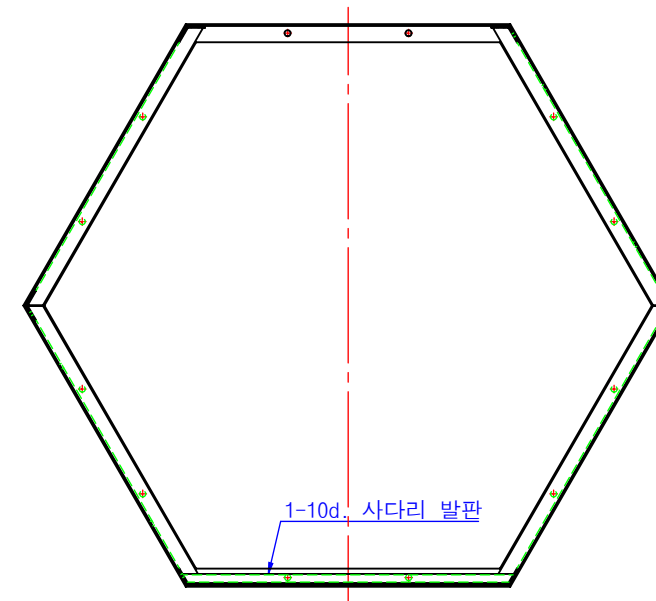
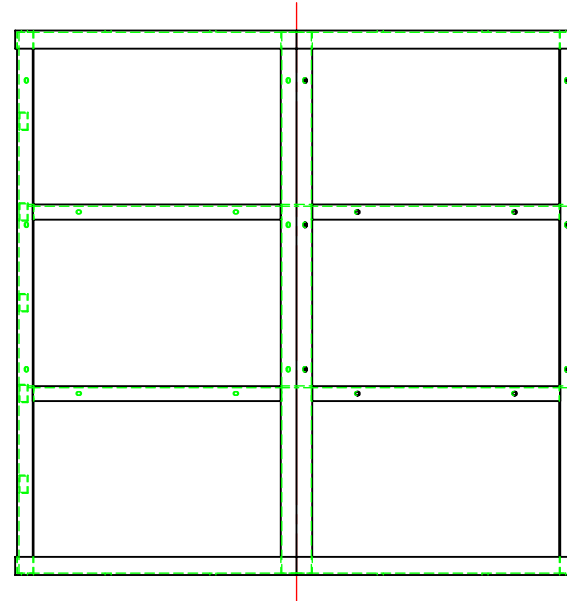
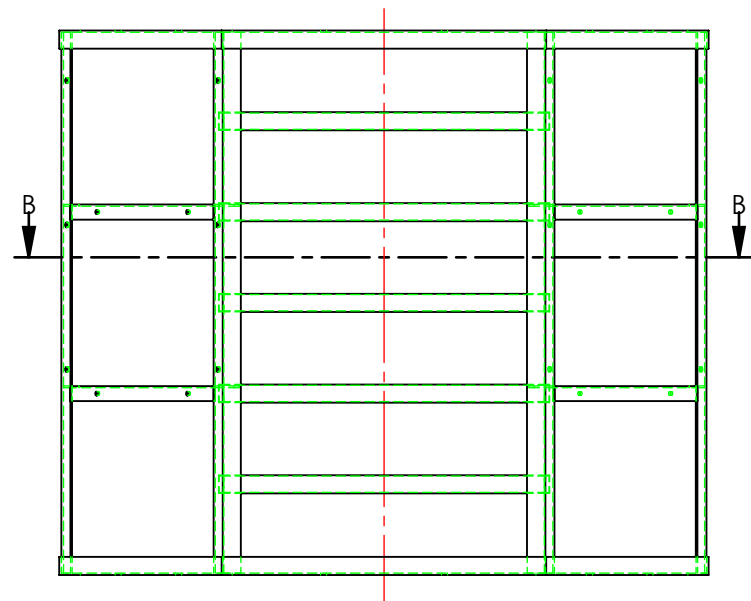
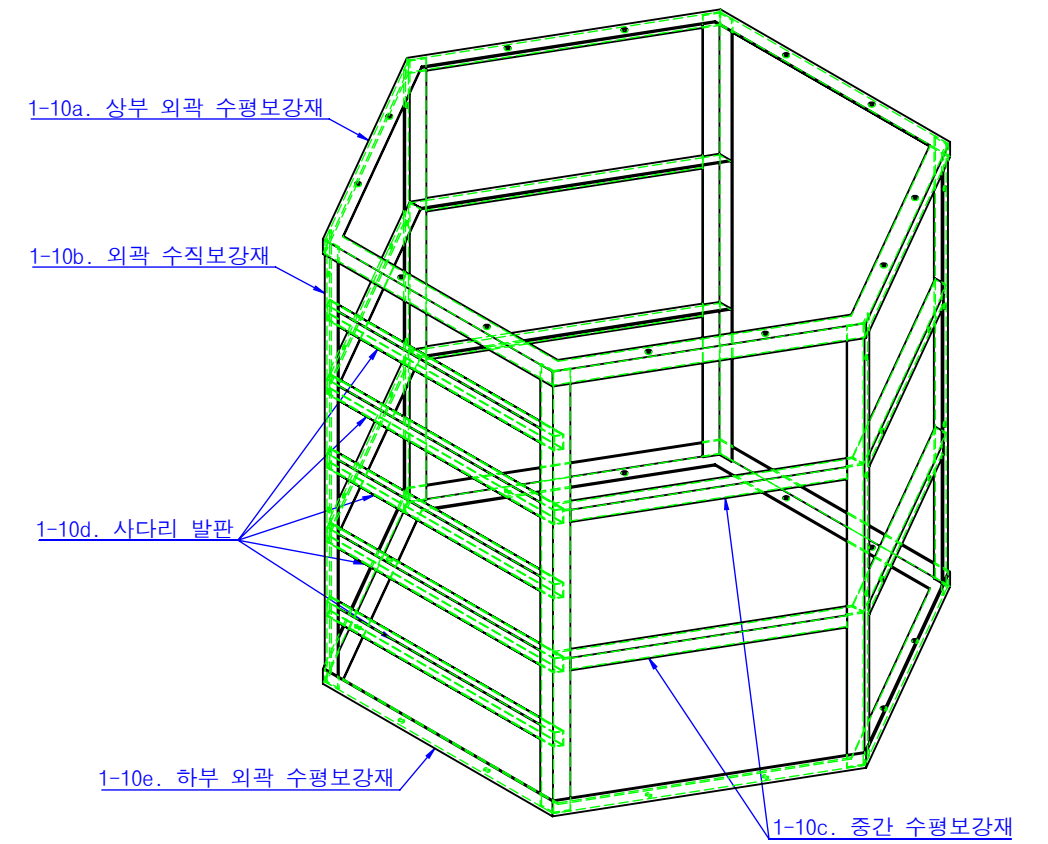
설계일자	축척	용지	모델명	도면명	도면번호
22.11	1:25	A3	-	Lower Modular Mast	1-10

등부표 상세도

(스마트 중형 등부표)



단면 A-A

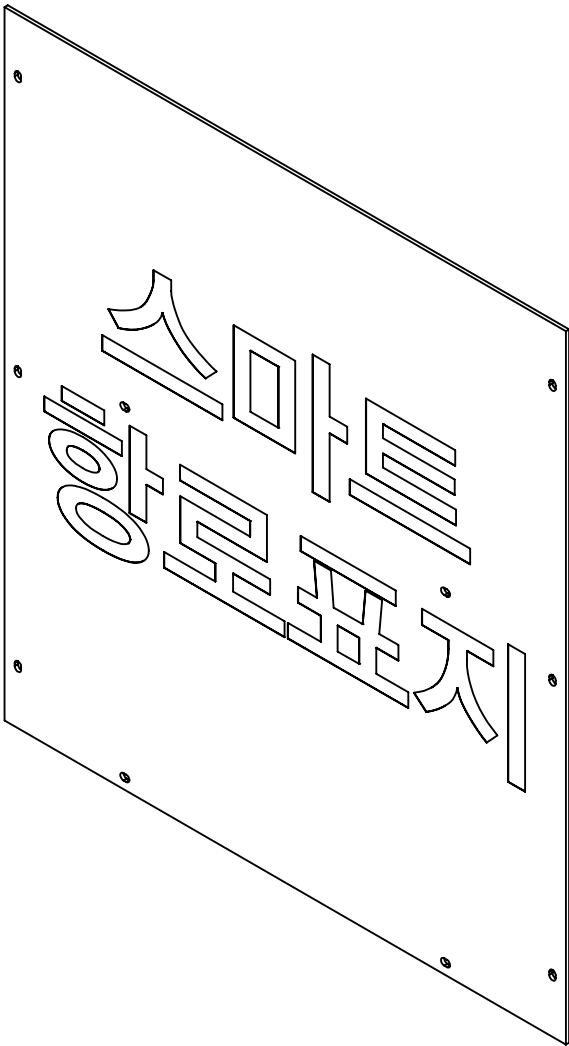
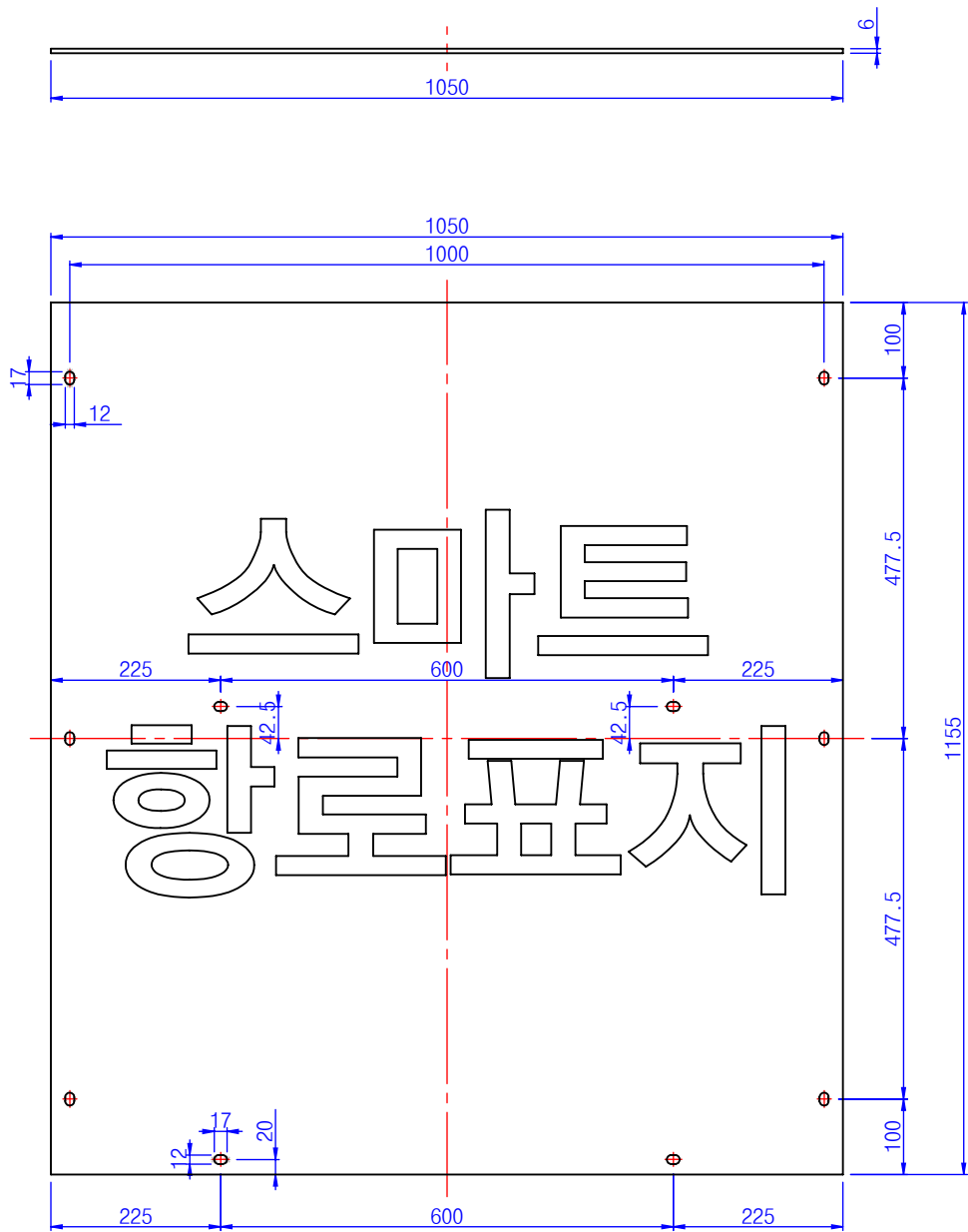


단면 B-B

설계일자	축척	용지	모델명	도면명	도면번호
22.11	1:25	A3	-	Lower Modular Mast(부품명표기)	1-10

등부표 상세도

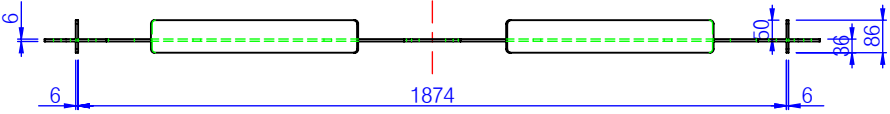
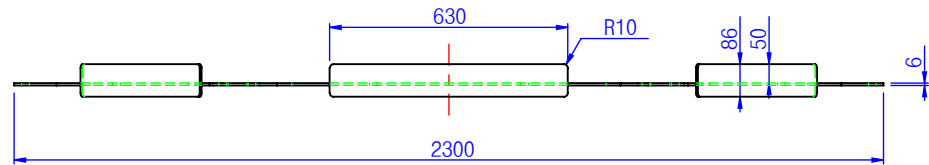
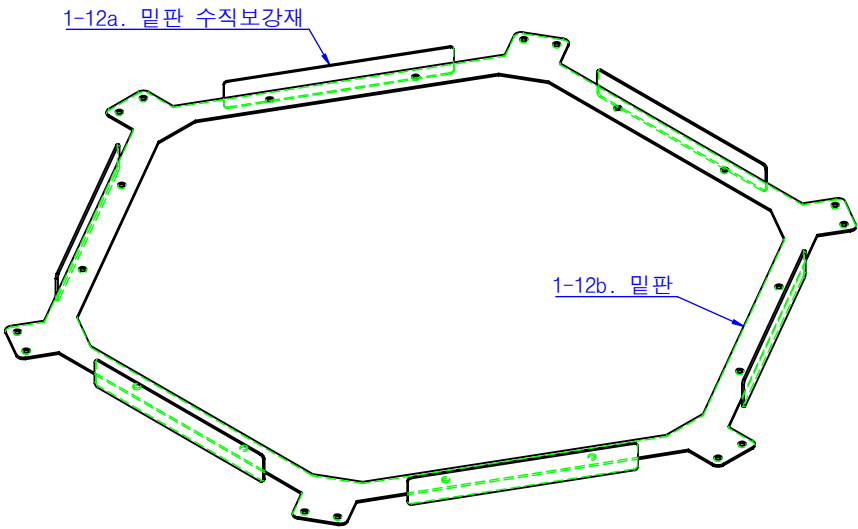
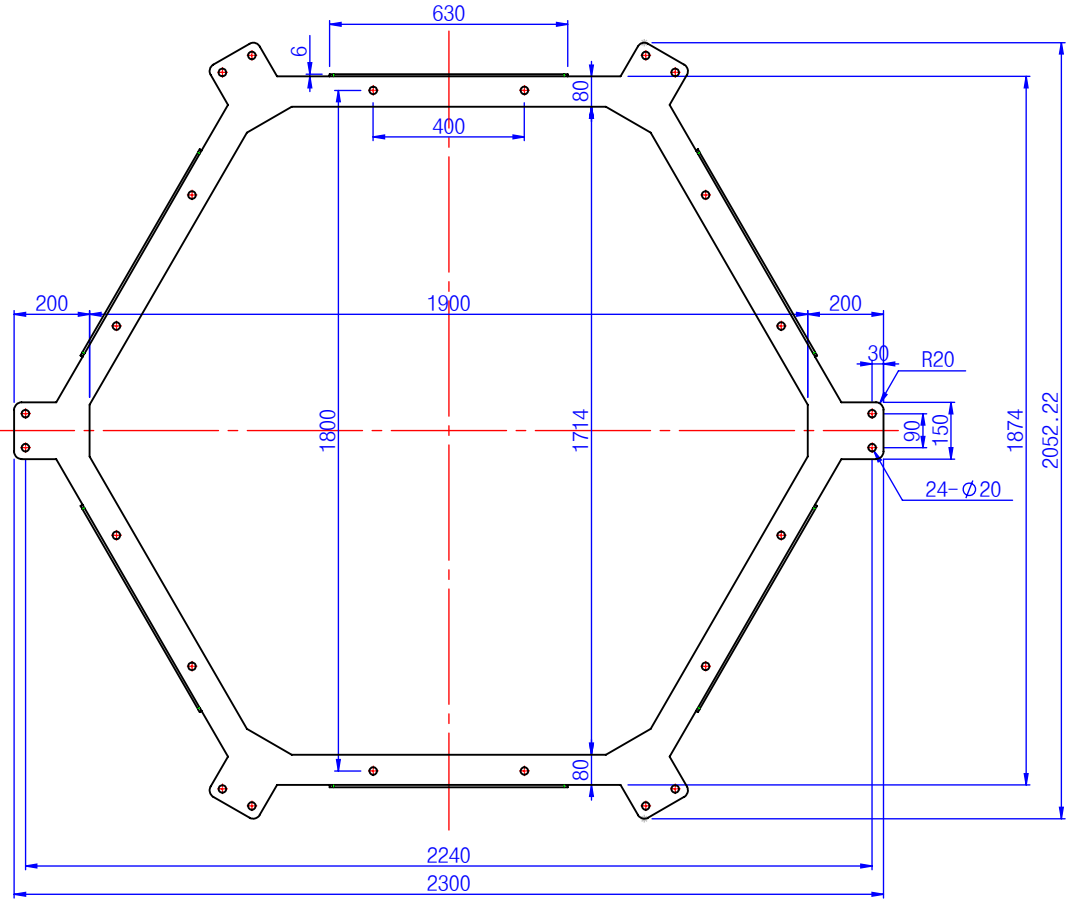
(스마트 중형 등부표)



	설계일자	축척	용지	모델명	도면명	도면번호
	22.11	1:10	A3	-	표지판	1-11

등부표 상세도

(스마트 중형 등부표)



	설계일자	축척	용지	모델명	도면명	도면번호
	22.11	1:20	A3	-	Modular Mast 밀판	1-12

< 표체 부재목록표 >

(스마트 중형 등부표(1안))

부재 번호	명칭 (Description)	재질 (Material)	규격 (Size)	수량 (Q'ty)	중량(kg) (Weight)	비고 (Remark)
2-01	표체	SS275	Ø3600x1950	1	3157.207	
2-02	축전지함 해치	SS275 Rubber	878x989x154	1	54.825	
2-03	마스트 설치대	SS275	347.13x350x323.42	6	111.759	
2-04	맨홀	SS275 Rubber	610x510x77	1	42.021	
2-05	인양고리	SS275	370x170x40, R130, 55t	4	128.142	
2-06	계류고리	SS275	370x170x40, R130, 55t	2	64.071	
2-07	표체 프레임	SS275	1232x1674.88, 9t	4	353.4	
표체 총 중량					3911.425	

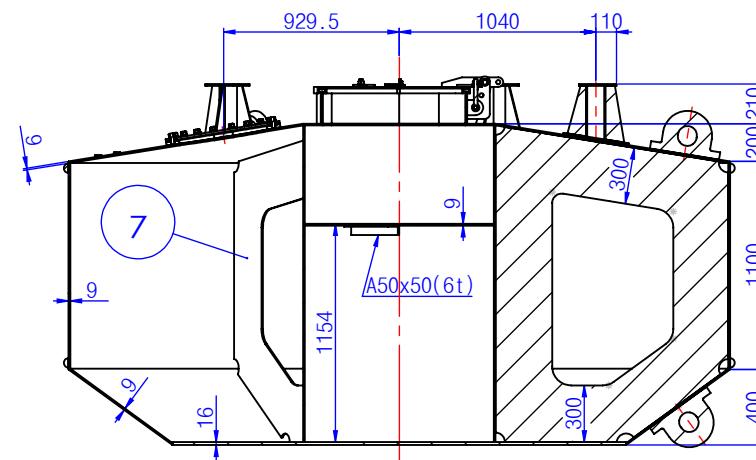
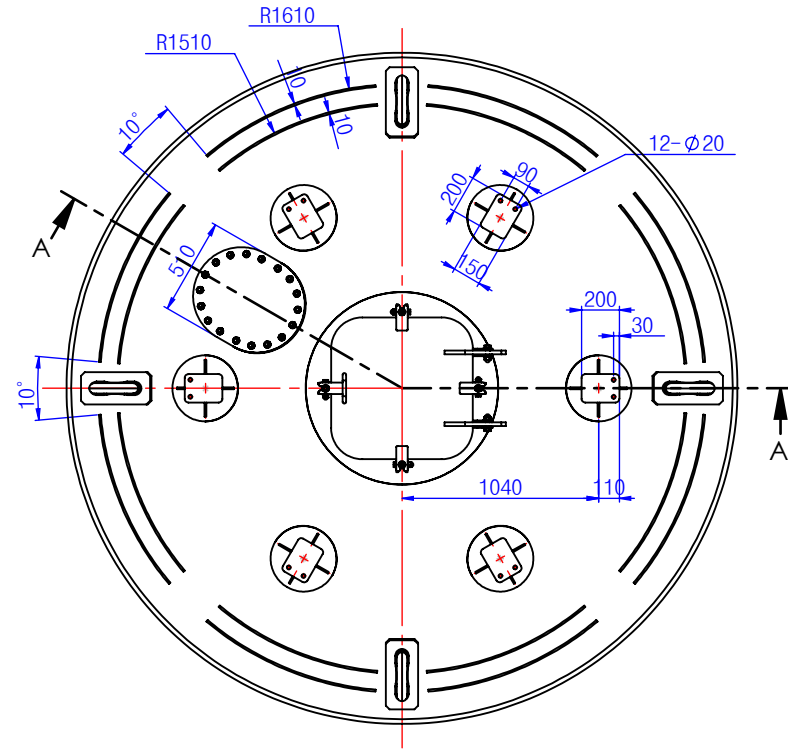
부재 번호	명칭 (Description)	재질 (Material)	규격 (Size)	수량 (Q'ty)	중량(kg) (Weight)	비고 (Remark)
2-01a	축전지함 코밍	SS275	718x718x170.5, 9t	1	31.174	
2-01b	축전지함 코밍 힌지	SS275	120x224.5, 6t	4	3.474	
2-01c	잠금장치	SS275	85x80, 9t	8	3.295	
2-01d	축전지함 코밍 수평판	SS275	Ø1018, 9t	1	24.074	
2-01e	논슬립바	SS275	10x10x15247.2	1	12.085	
2-01f	표체 상판	SS275	Ø3500x200, 9t	1	616.513	
2-01g	표체 보호강	SS275	HRB Ø50x10995.57	2	170.507	
2-01h	표체 측판	SS275	Ø3500x1100, 9t	1	847.582	
2-01i	표체 경사판	SS275	Ø3500, Ø2400, 680, 9t	1	440.972	
2-01j	표체 하판	SS275	Ø2400, 16t	1	568.201	
2-01k	표체 내부 중앙관	SS275	Ø1018x1675 9t	1	357.118	
2-01l	축전지함 하판	SS275	Ø1000, 9t	1	55.488	
2-01m	축전지함 수평보강재	SS275	A50x50x1000, 6t	2	8.717	
2-02a	해치 힌지	SS275	324x50, 20t	2	4.271	
2-02b	볼트걸이	SS275	134x60, 10t	4	2.197	
2-02c	해치 손잡이	SS275	RB Ø19x221	1	0.752	
2-02d	해치판	SS275	750x7500, 9t	1	38.09	
2-02e	해치 레일(Out)	SS275	FB 25x2716.73, 6t	1	3.177	
2-02f	해치 레일(In)	SS275	FB 25x2409.53, 6t	1	3.177	
2-02g	해치 보강재	SS275	FB 25x840, 6t	2	1.971	
2-02h	해치 가스켓	Rubber	30x2679.03, 20t	1	1.458	
2-03a	마스트 설치판	SS275	200x150, 10t	6	13.672	
2-03b	지주	SS275	Ø101.6x283.63, 5.7t	6	22.279	
2-03c	수직보강재-1	SS275	100x267.26, 9t	6	7.269	
2-03d	수직보강재-2	SS275	100x299.75, 9t	6	9.196	
2-03e	수직보강재-3	SS275	100x275.45, 9t	12	14.027	
2-03f	하판	SS275	Ø350, 10t	6	45.316	
2-04a	맨홀 커버	SS275	610x510, 12t	1	23.515	
2-04b	맨홀 카스켓	Rubber	590x490, 5t	1	0.345	
2-04c	맨홀 외곽틀	SS275	610x510, 18t, M18x60	1	17.161	

	설계일자	축척	용지	모델명	도면명	도면번호
	22.11	1:40	A3	-	스마트 중형 등부표(1안) 표체 부재목록표	

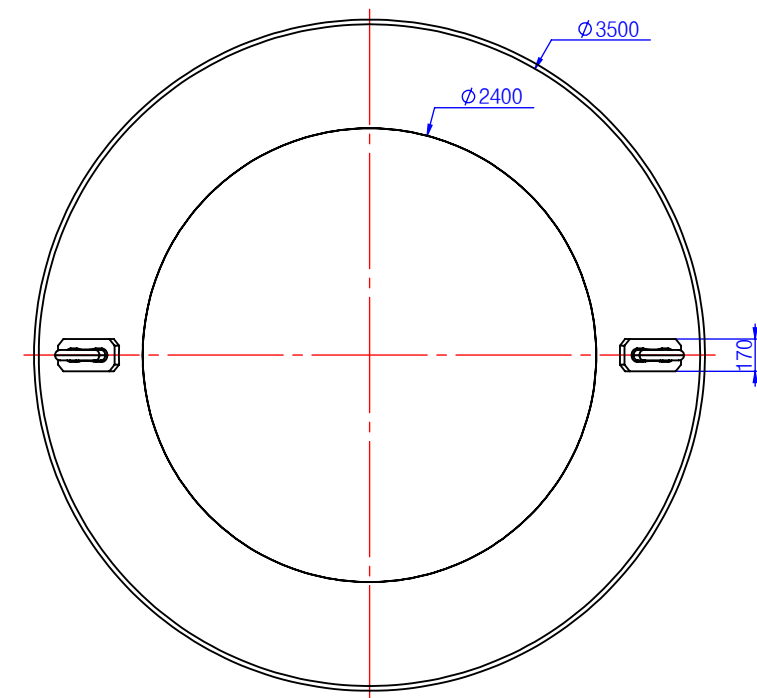
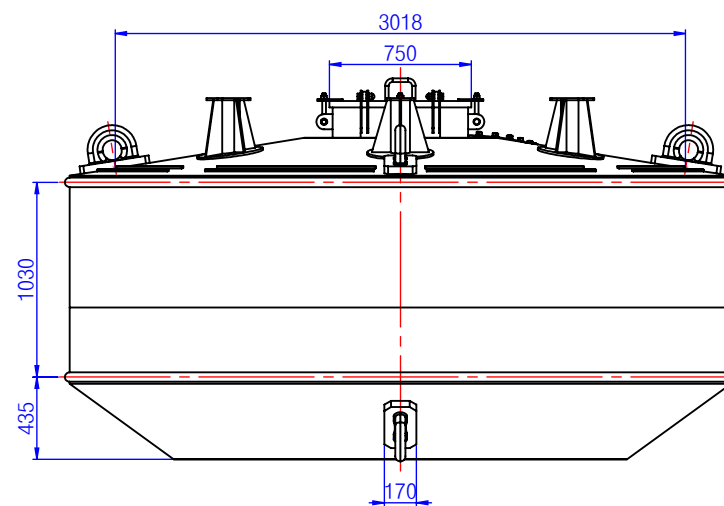
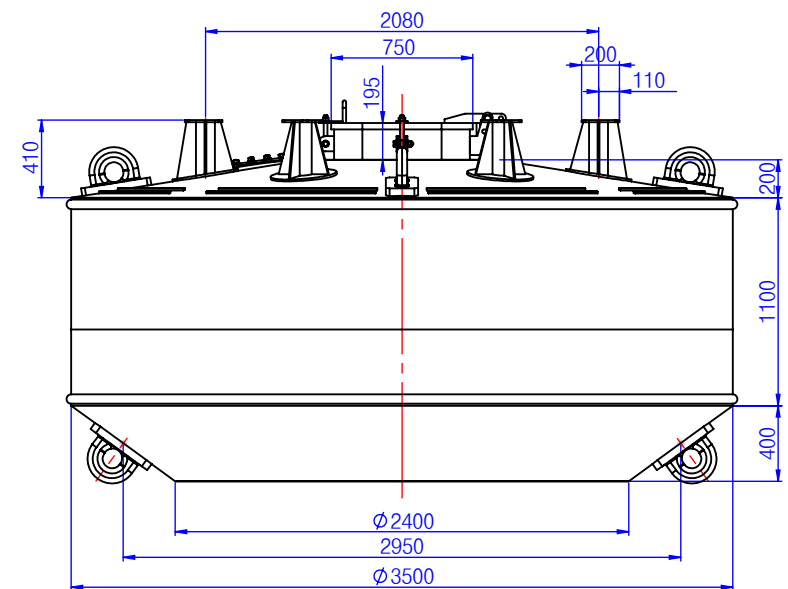
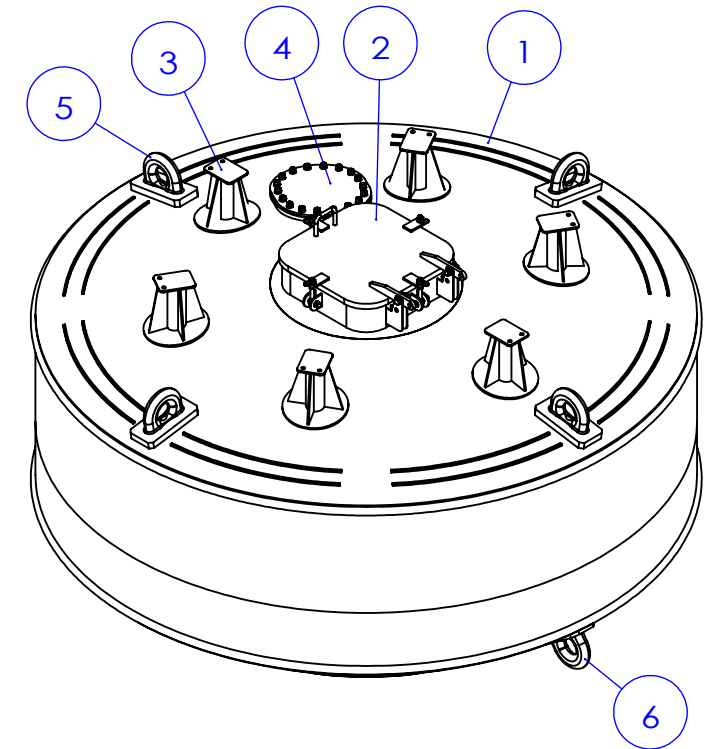
등부표 상세도

(스마트 중형 등부표(1안))

NO	DESCRIPTION	MATERIAL	Q'TY
2-01	표체	SS275	1set
2-02	축전지함 해치	SS275	1set
2-03	마스트 설치대	SS275	6ea
2-04	맨홀	SS275, Rubber	1set
2-05	인양고리	SS275	4ea
2-06	계류고리	SS275	2ea
2-07	표체 프레임	SS275	4ea



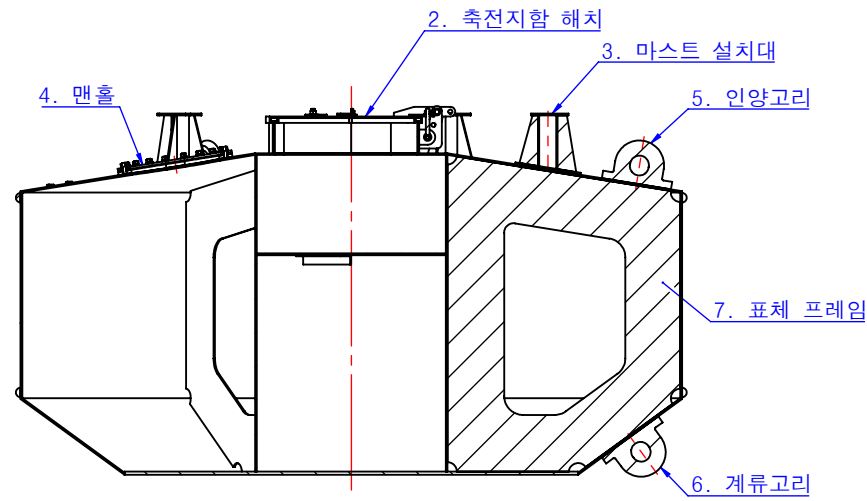
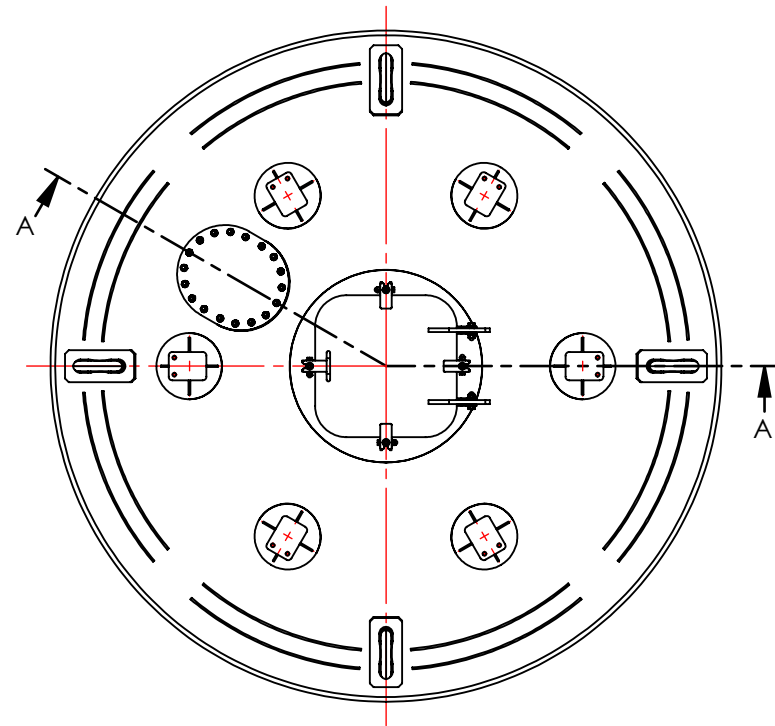
단면 A-A



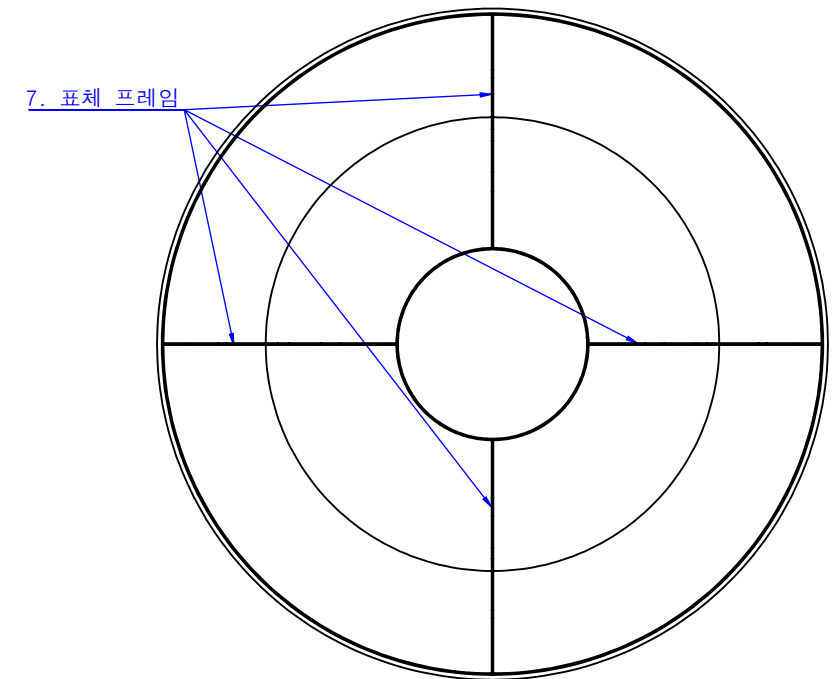
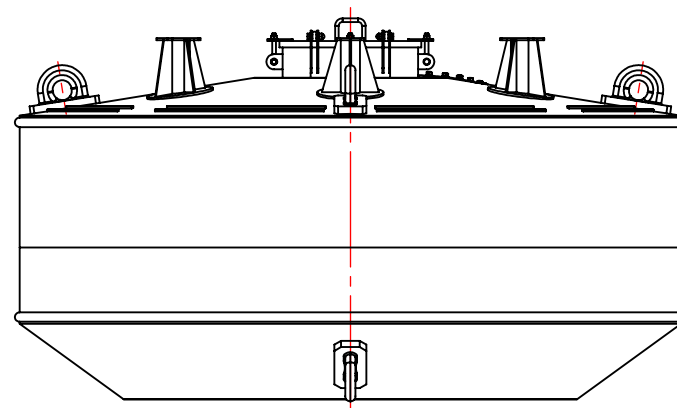
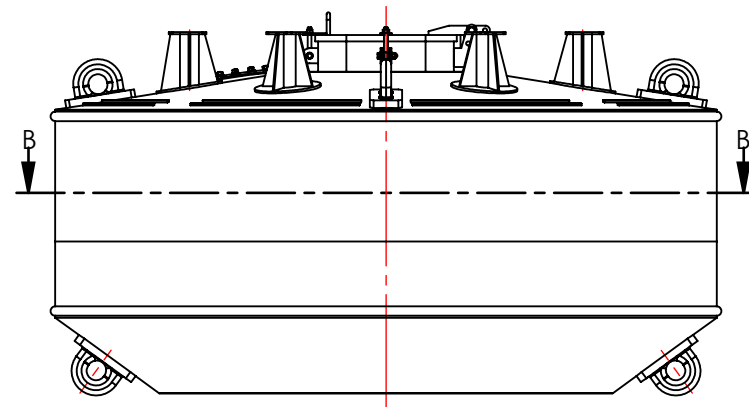
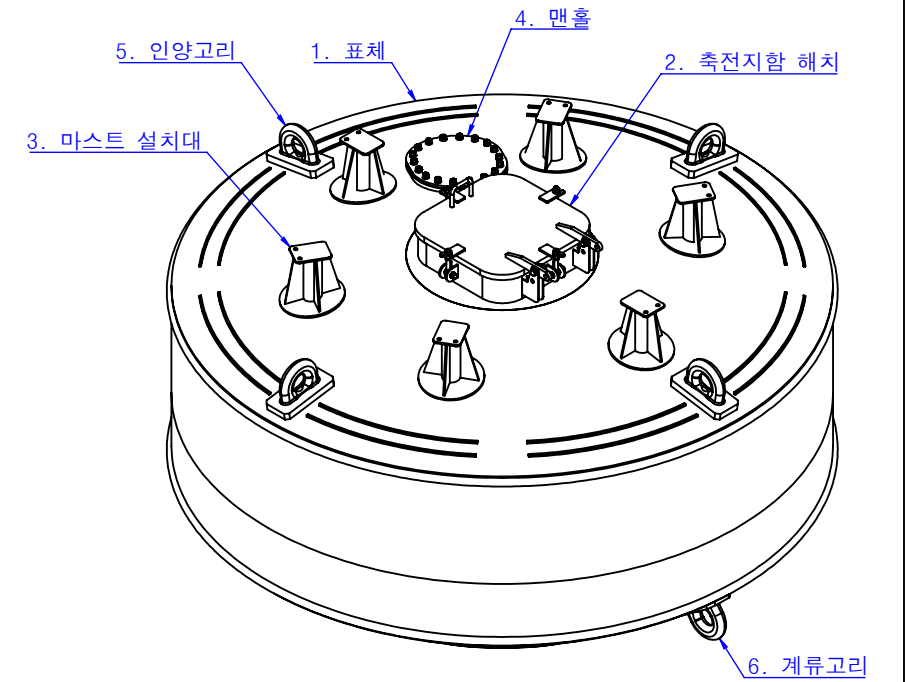
설계일자	축척	용지	모델명	도면명	도면번호
22.11	1:40	A3	-	표체 조립도	2

등부표 상세도

(스마트 중형 등부표(1안))



단면 A-A

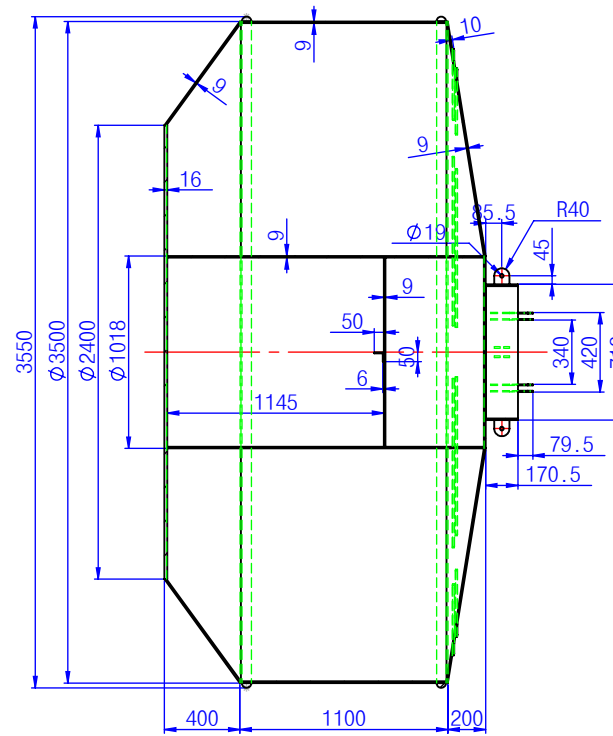
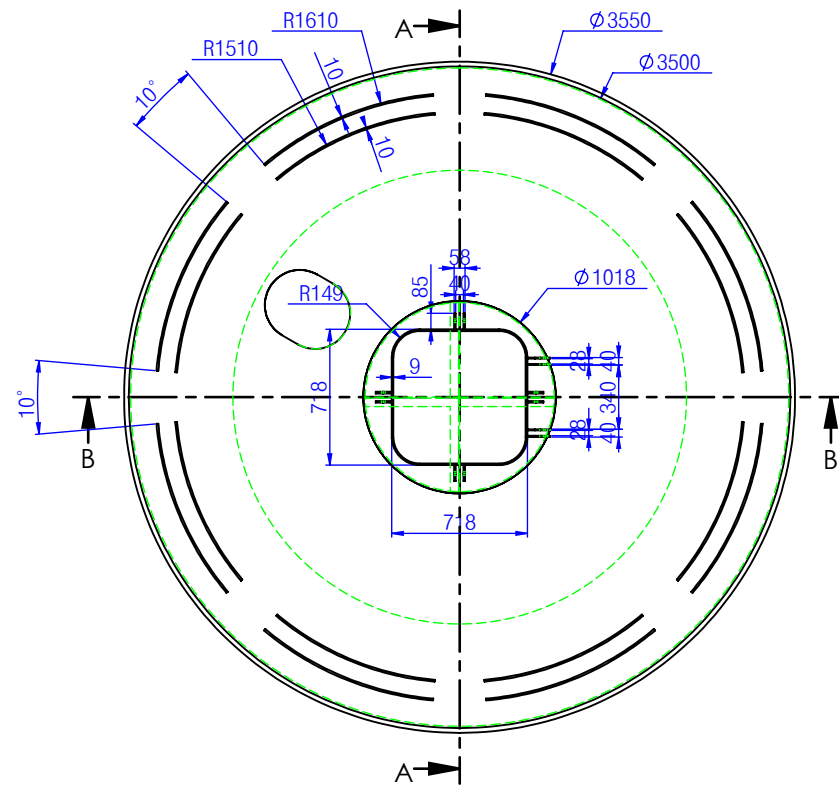


단면 B-B

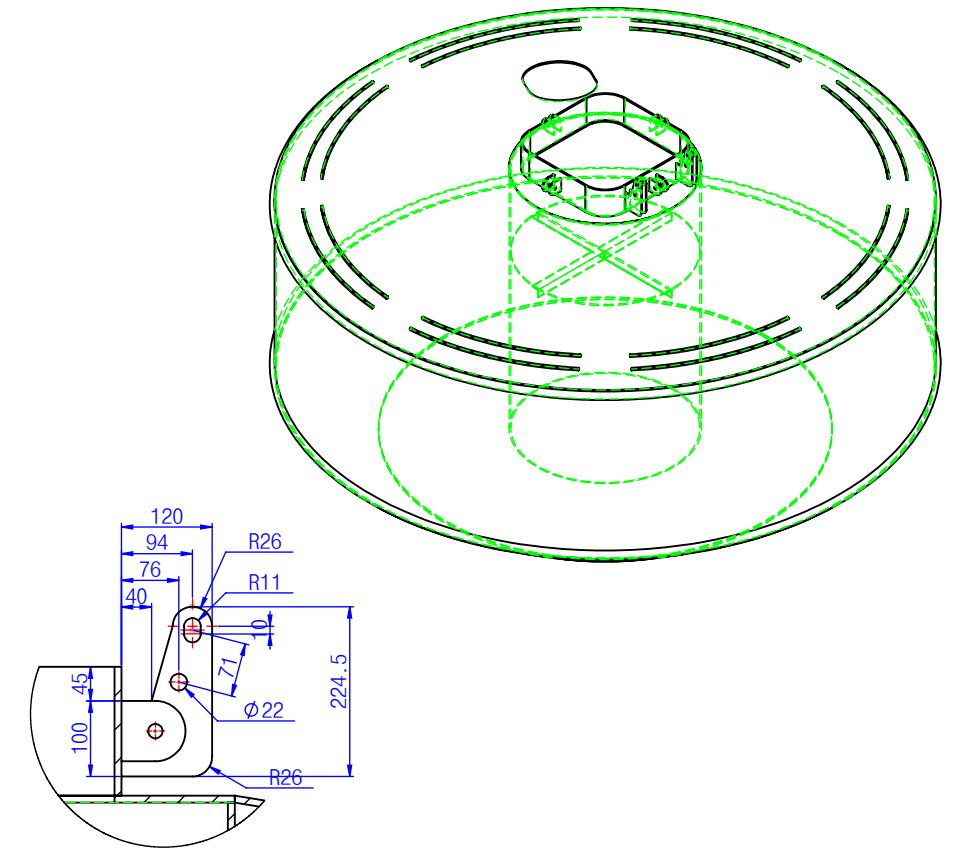
설계일자	축척	용지	모델명	도면명	도면번호
22.11	1:40	A3	-	표체 조립도(부품명표기)	2

등부표 상세도

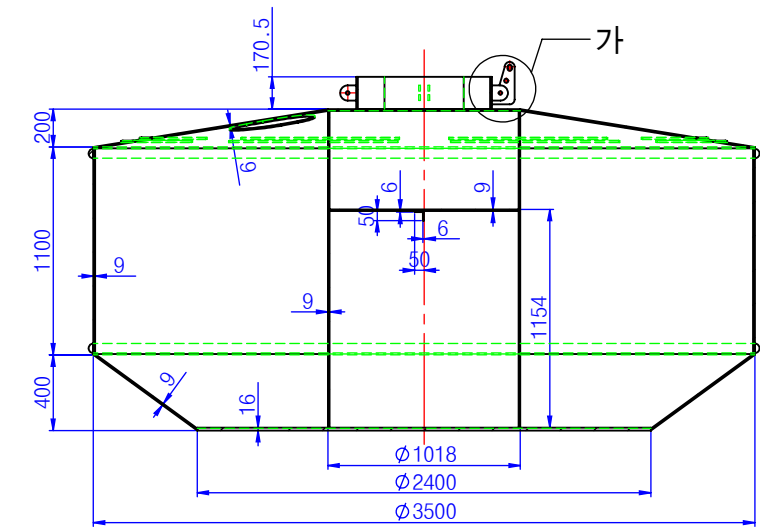
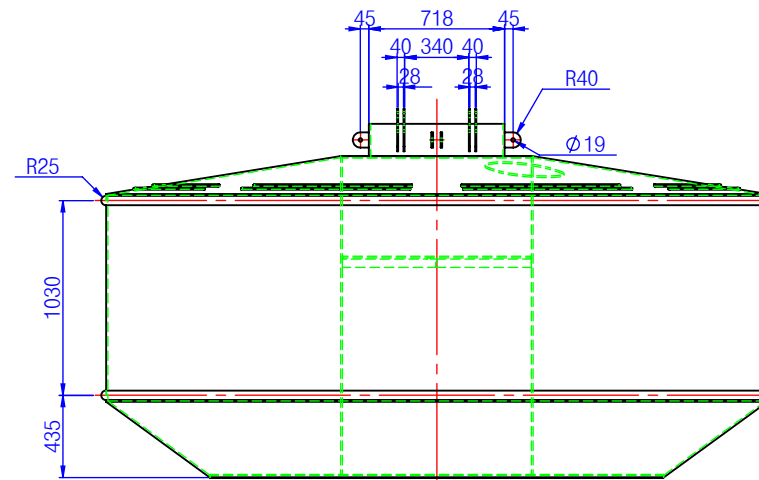
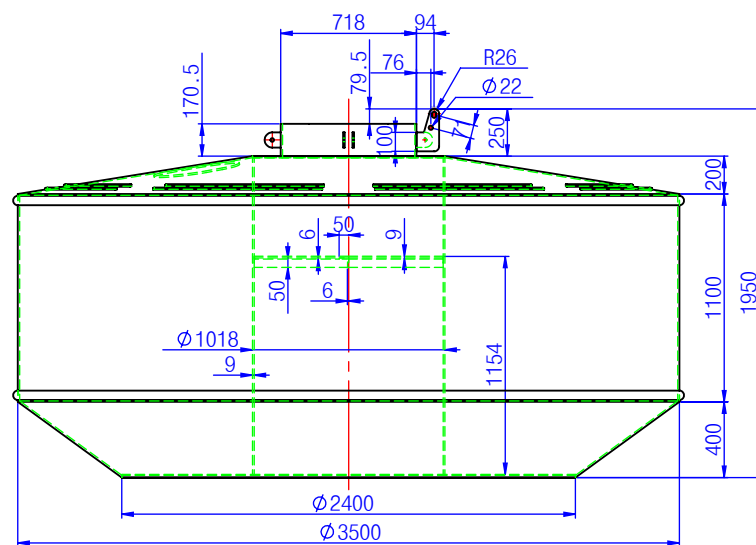
(스마트 중형 등부표(1안))



단면 A-A



상세 가
축척 1 : 10

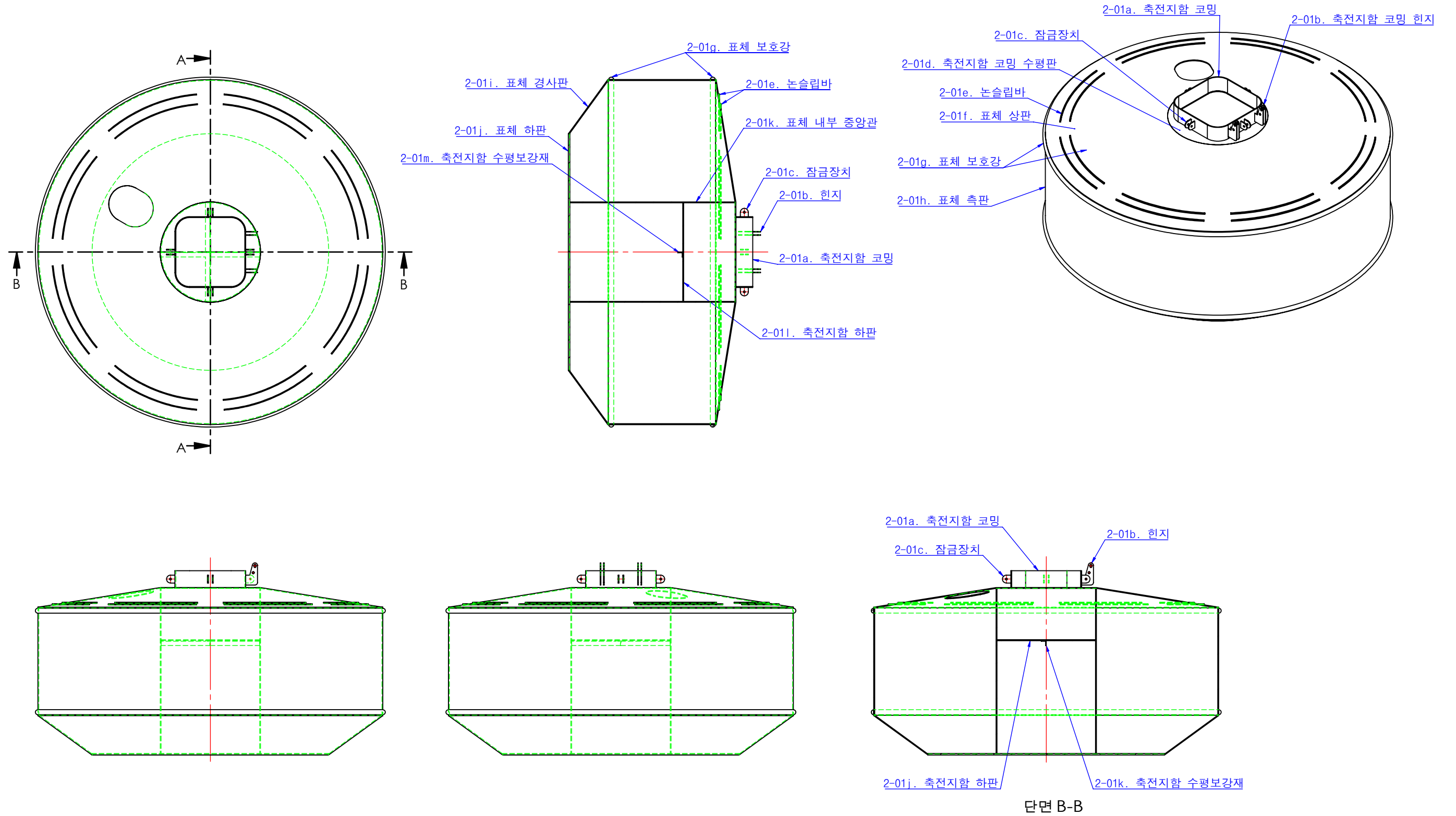


단면 B-B

설계일자	축척	용지	모델명	도면명	도면번호
22.11	1:40	A3	-	표체	2-01

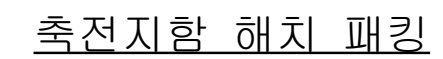
등부표 상세도

(스마트 중형 등부표(1안))



설계일자	축척	용지	모델명	도면명	도면번호
22.11	1:40	A3	-	표체(부품명표기)	2-01

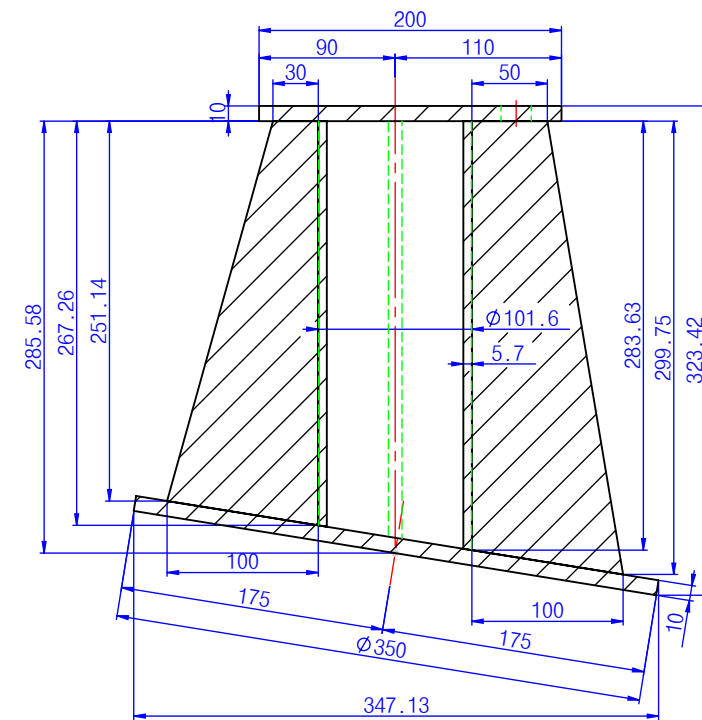
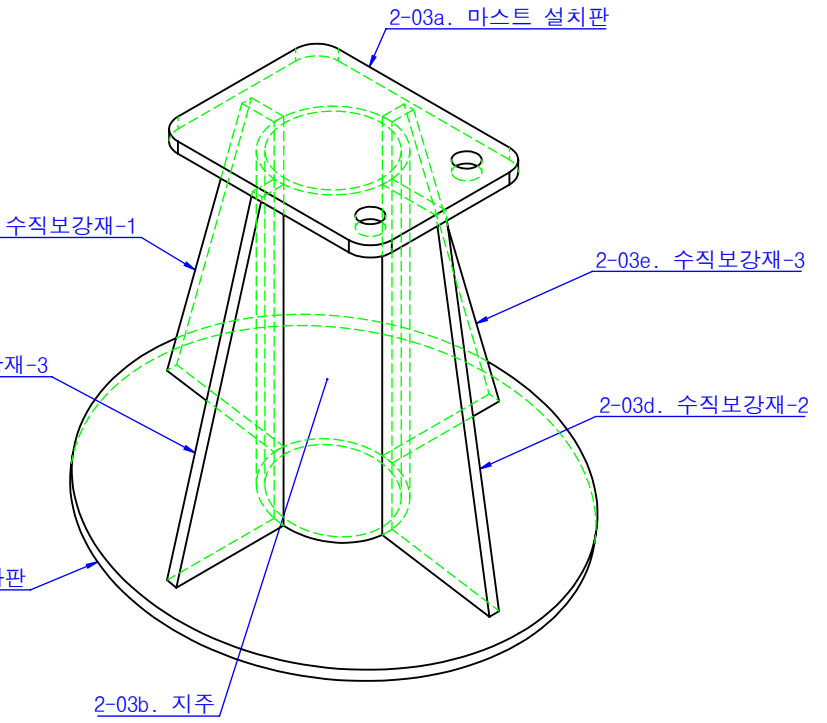
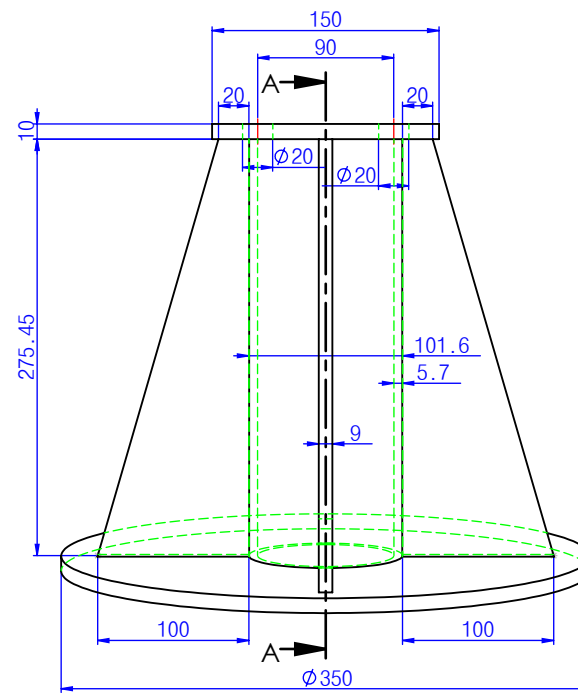
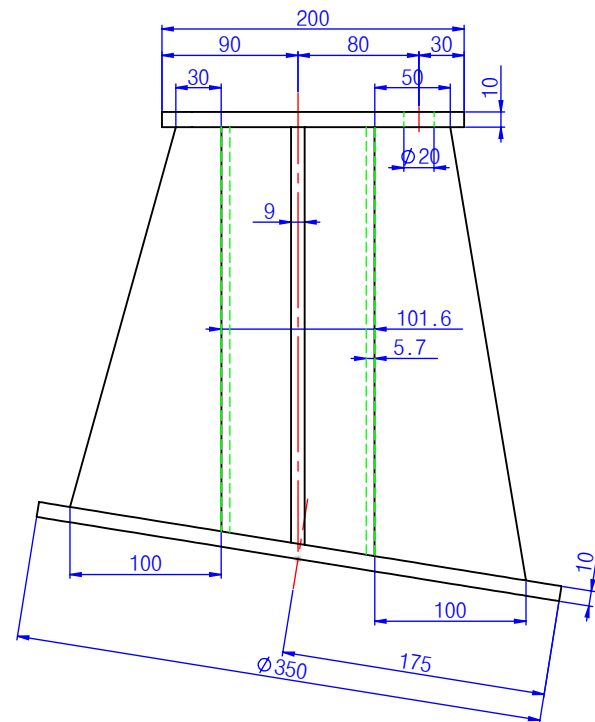
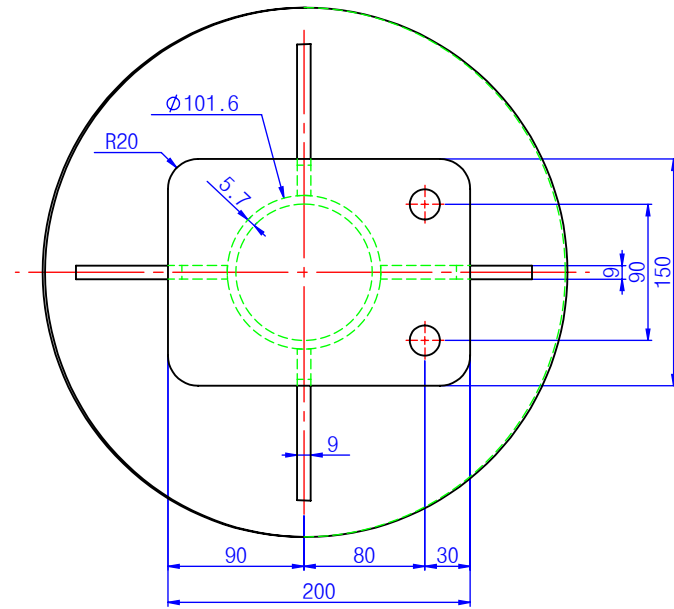
(스마트 중형 등부표(1안))



설계일자	축척	용지	모델명	도면명	도면번호
22.11	1:12.5	A3	-	축전지함 해치	2-02

등부표 상세도

(스마트 중형 등부표(1안))

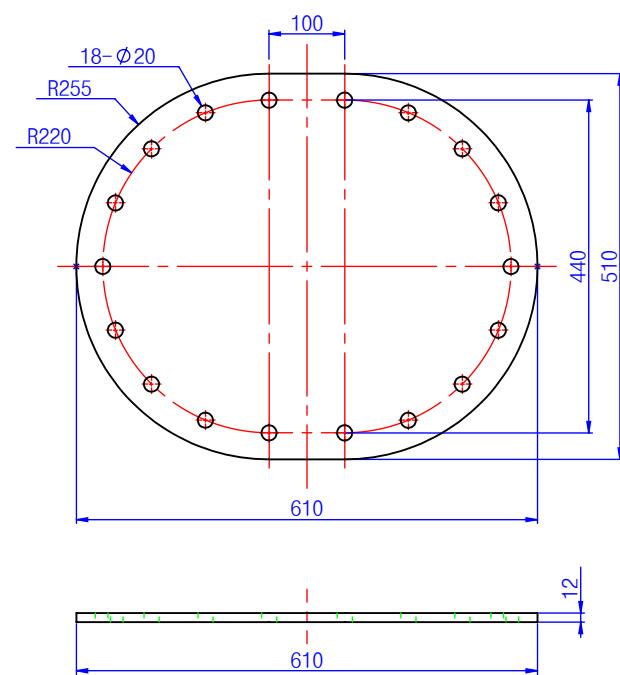


단면 A-A

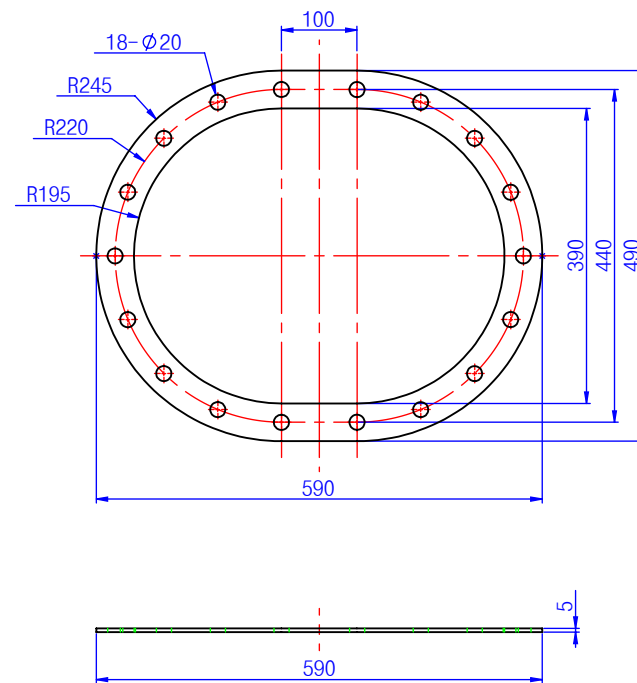
설계일자	축척	용지	모델명	도면명	도면번호
22.11	1:5	A3	-	마스트 설치대	2-03

등부표 상세도

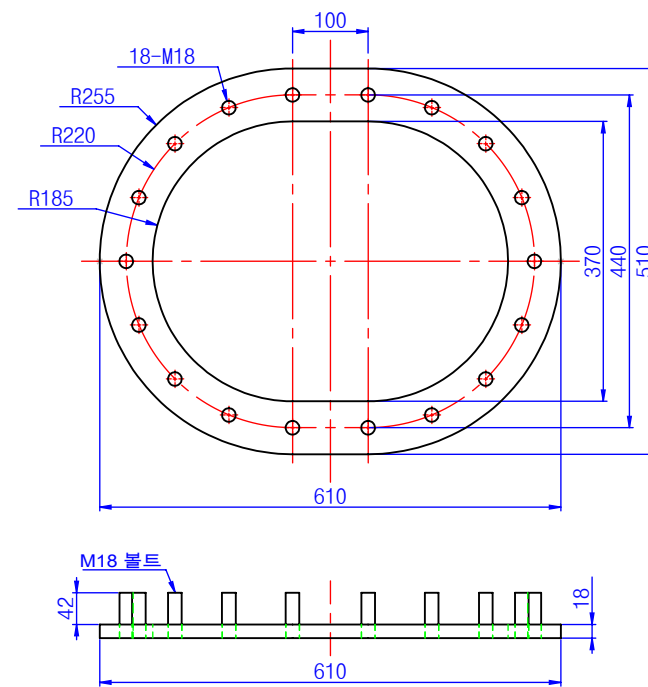
(스마트 중형 등부표(1안))



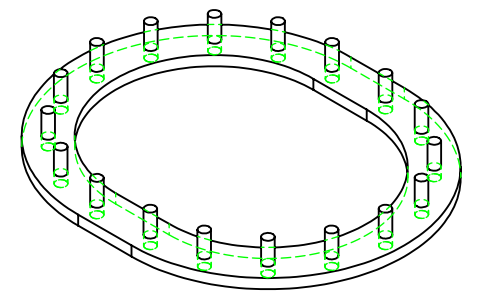
2-04a 맨홀 커버



2-04b 맨홀 가스켓



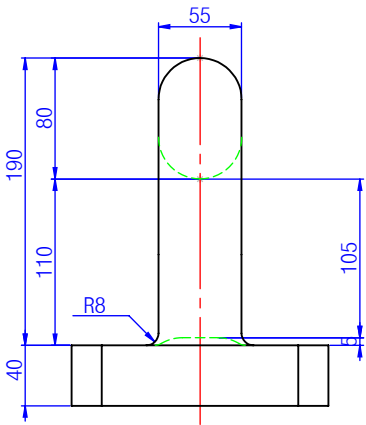
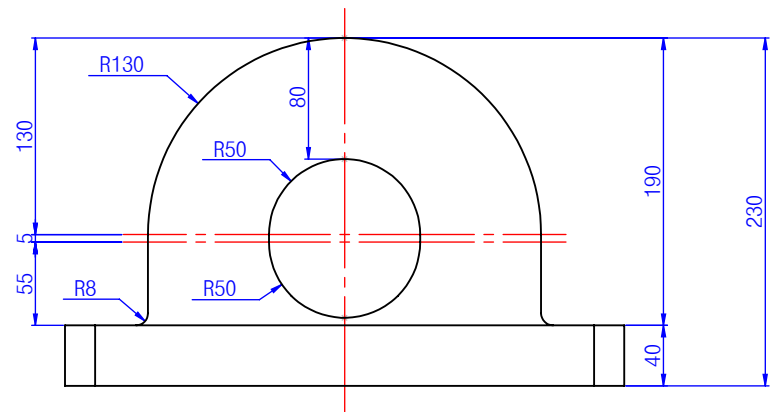
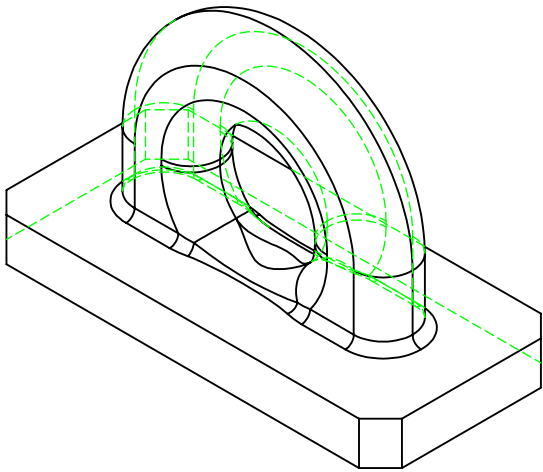
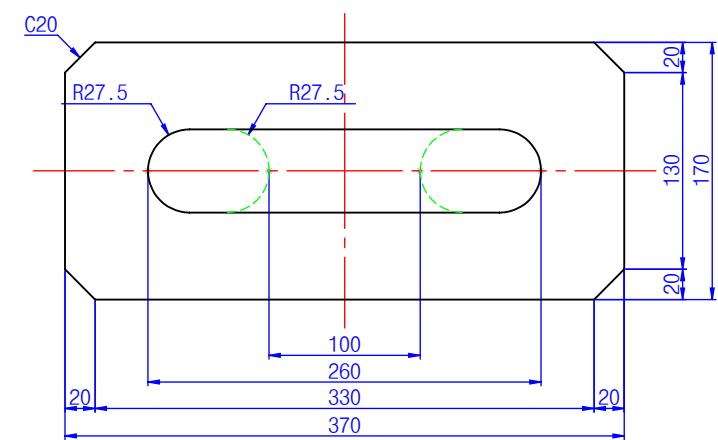
2-04c 맨홀 외곽틀



설계일자	축척	용지	모델명	도면명	도면번호
22.11	1:10	A3	-	맨홀 커버 맨홀 가스켓 맨홀 외곽틀	2-04a 2-04b 2-04c

등부표 상세도

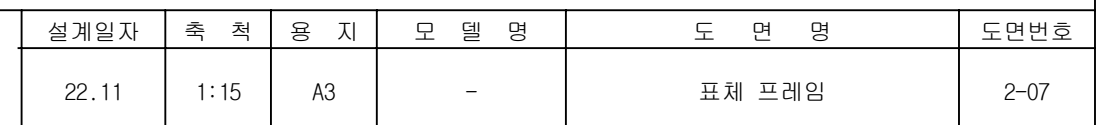
(스마트 중형 등부표(1안))



인양고리 및 계류고리

						도면번호
설계일자	축척	용지	모델명	도면명		
22.11	1:5	A3	-	인양고리 계류고리		2-05 2-06

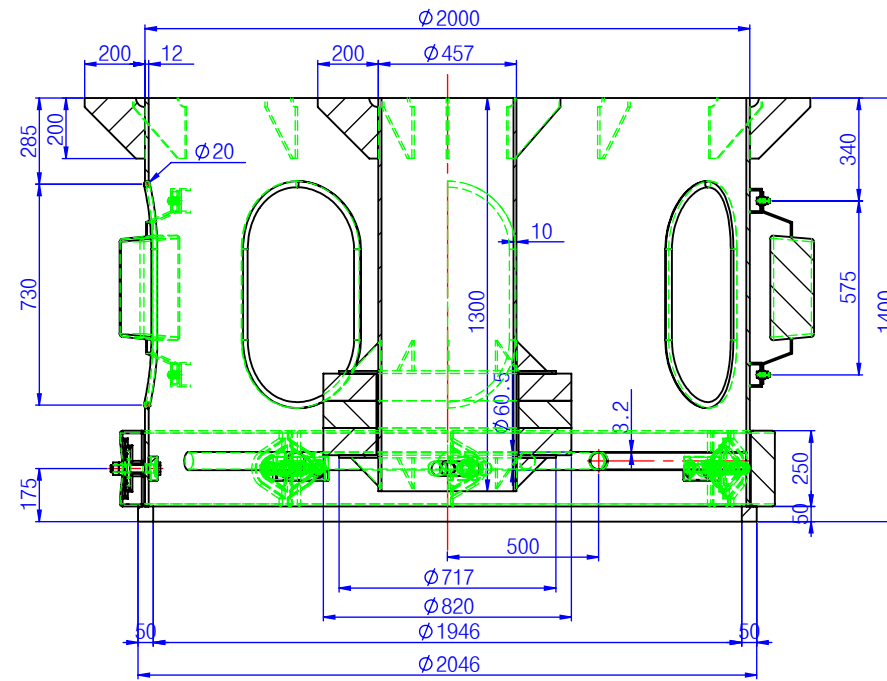
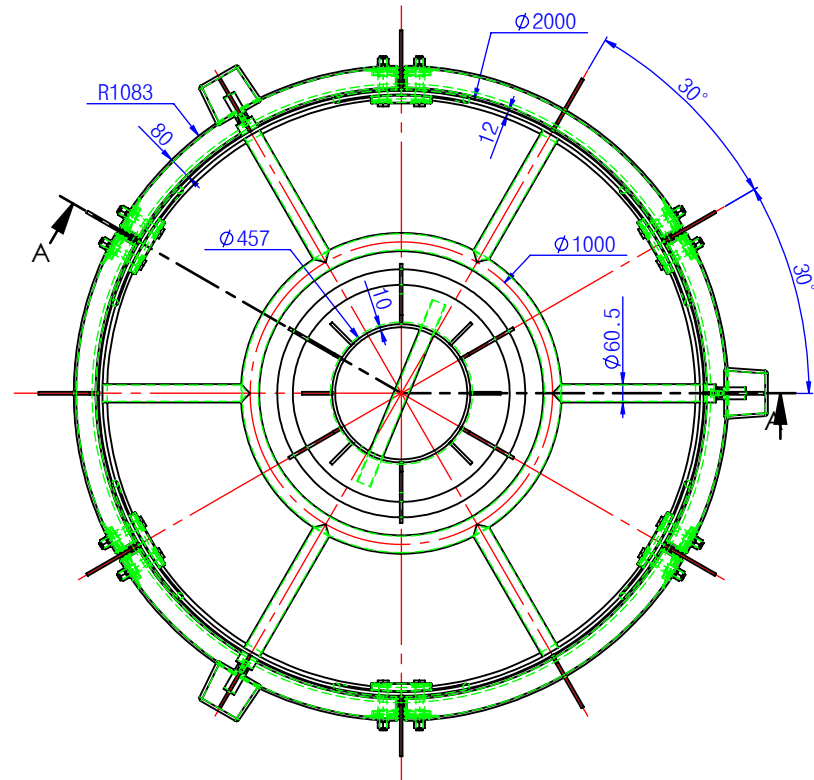
(스마트 중형 등부표(1안))



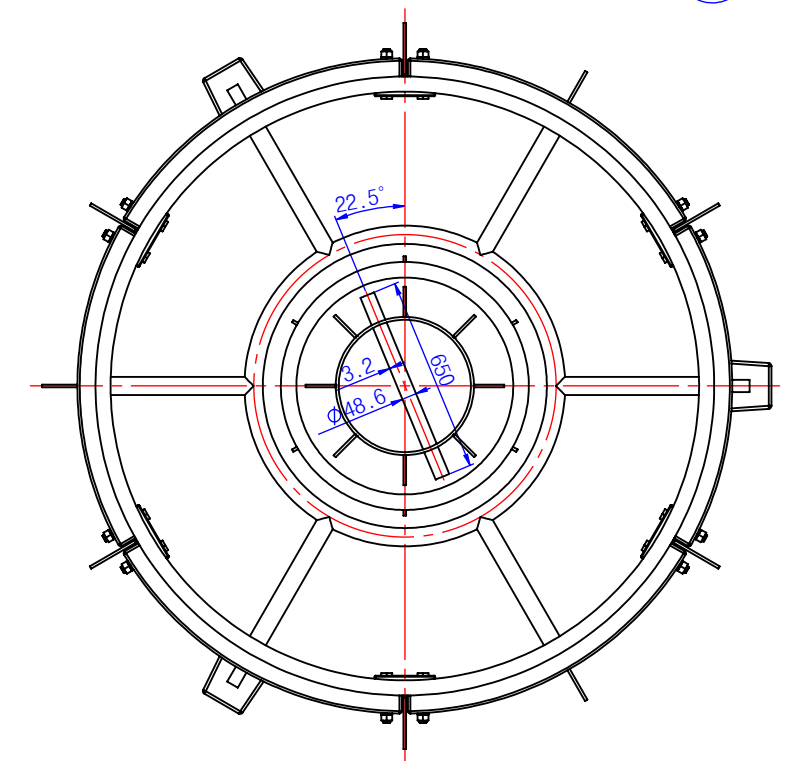
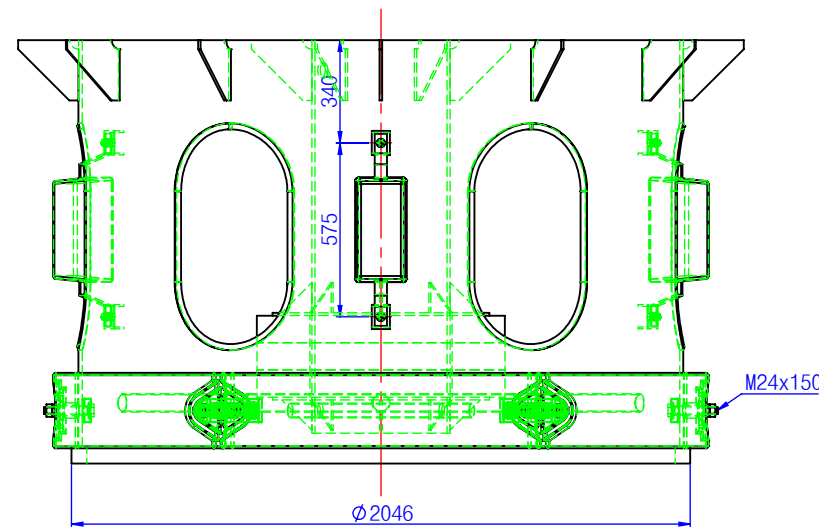
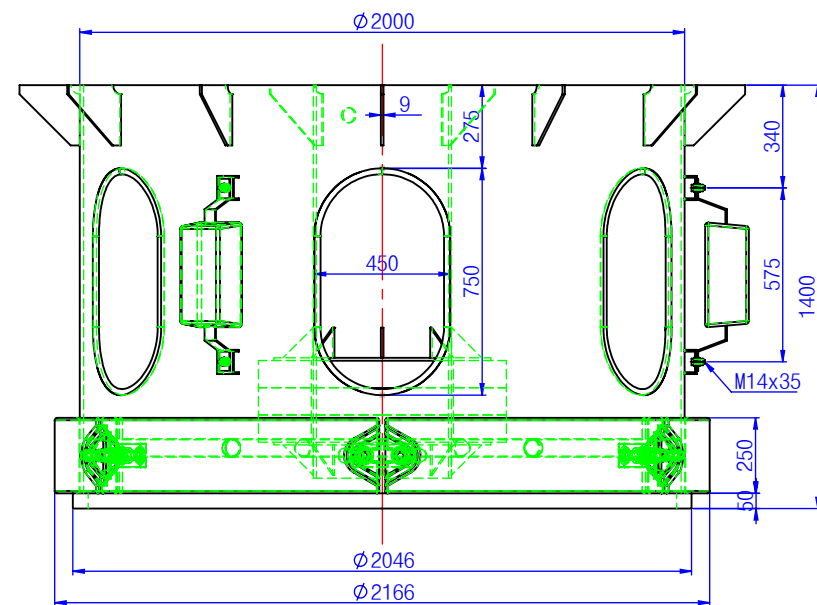
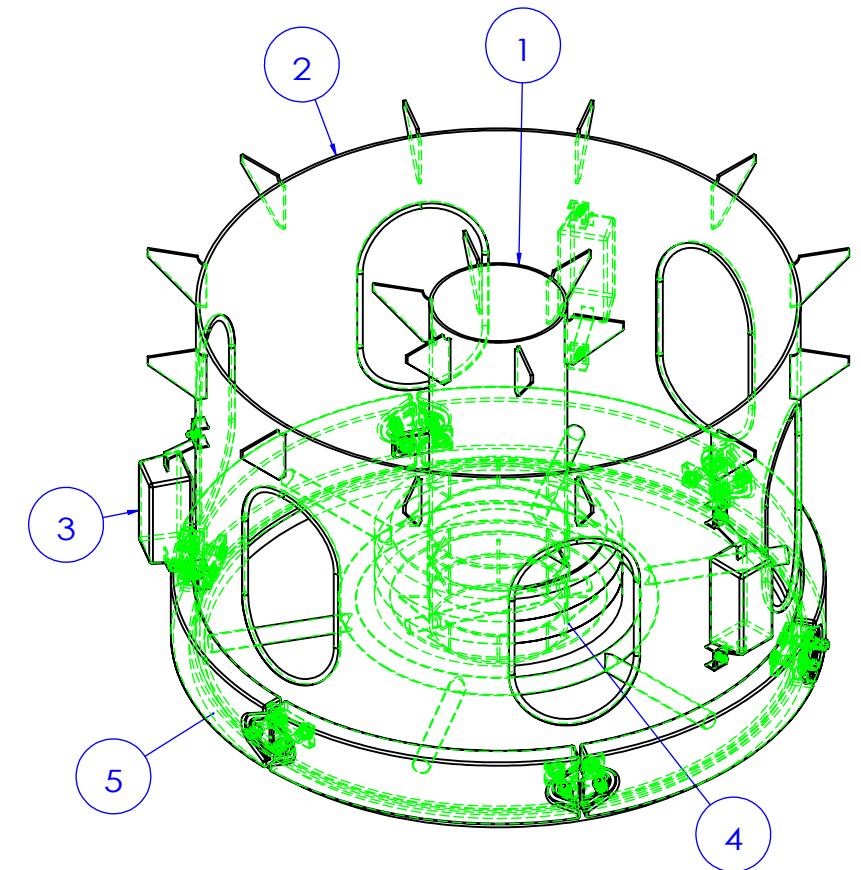
등부표 상세도

(스마트 중형 등부표(1안))

NO	DESCRIPTION	MATERIAL	Q'TY
3-01	내부 미통	SS275	1set
3-02	외부 미통	SS275	1set
3-03	아연판	ZINC Anode	3ea
3-04	내부 중추	SS275, Rubber	3ea
3-05	외곽 중추	SS275	6set



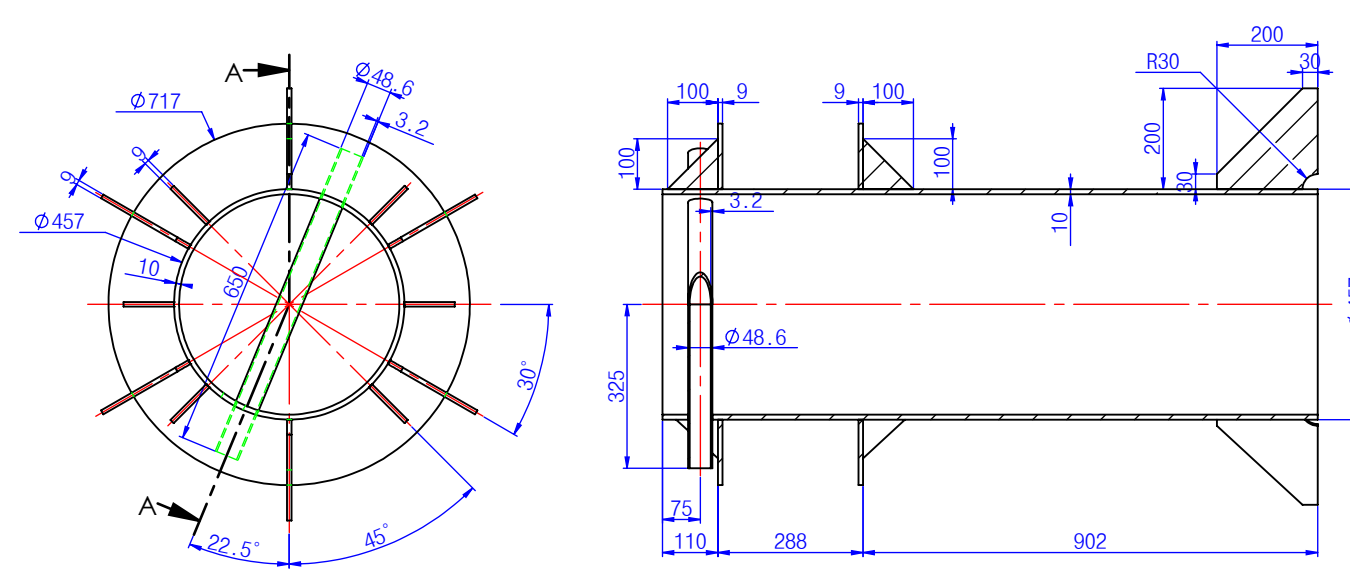
단면 A-A



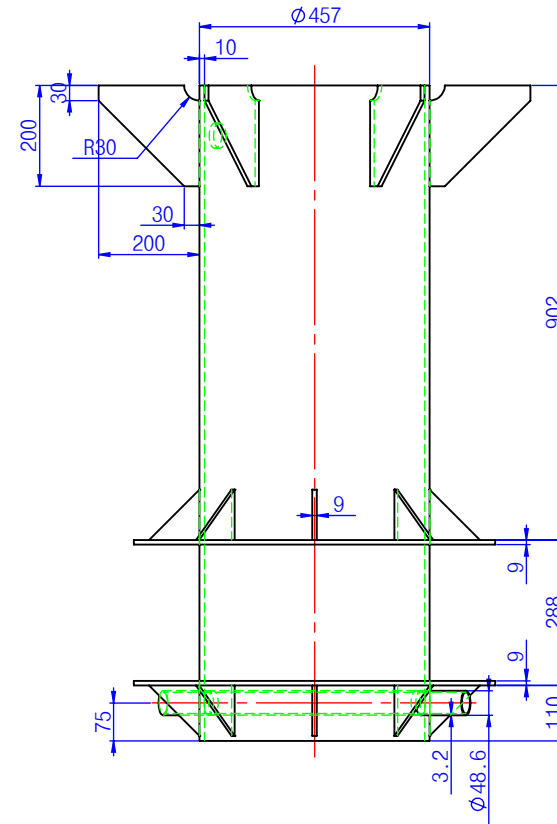
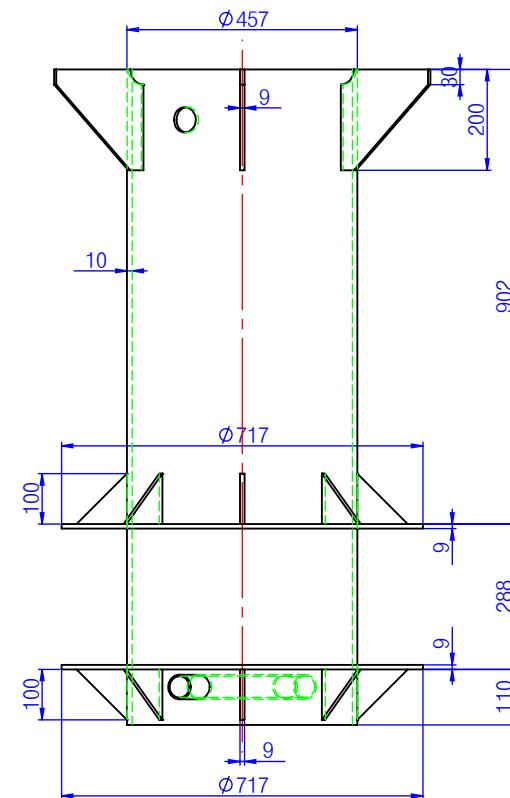
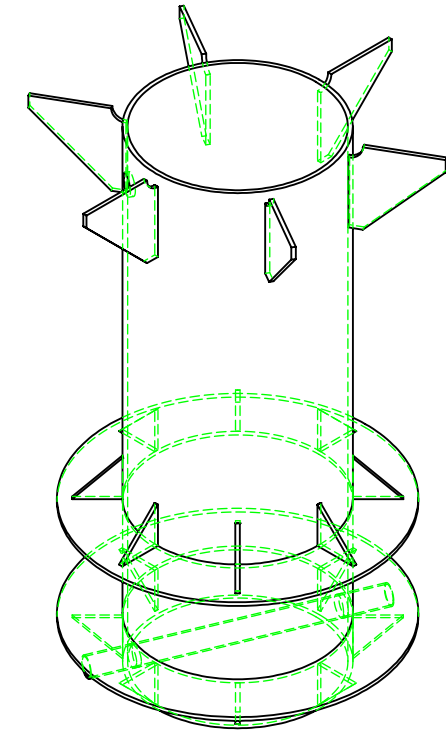
설계일자	축척	용지	모델명	도면명	도면번호
22.11	1:25	A3	-	미통 및 중추 조립도	3

등부표 상세도

(스마트 중형 등부표(1안))



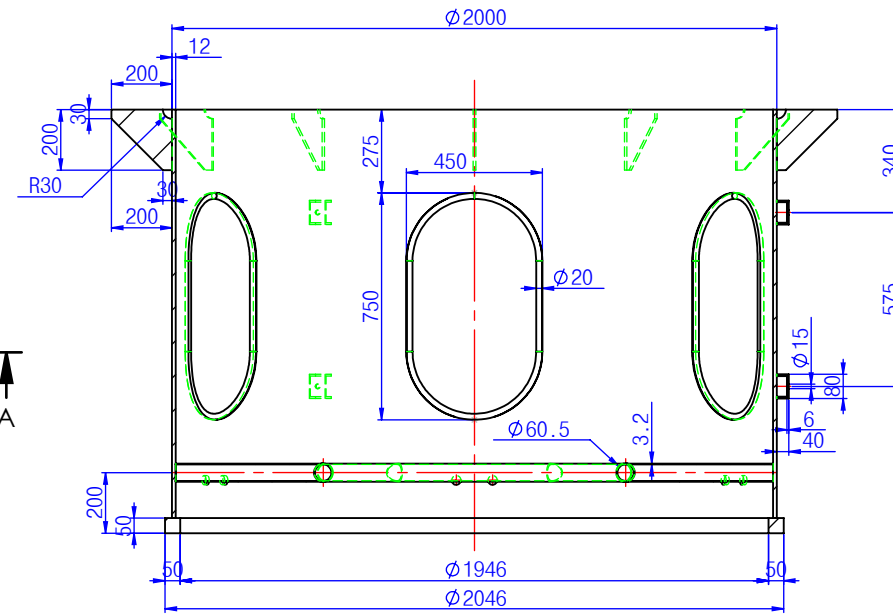
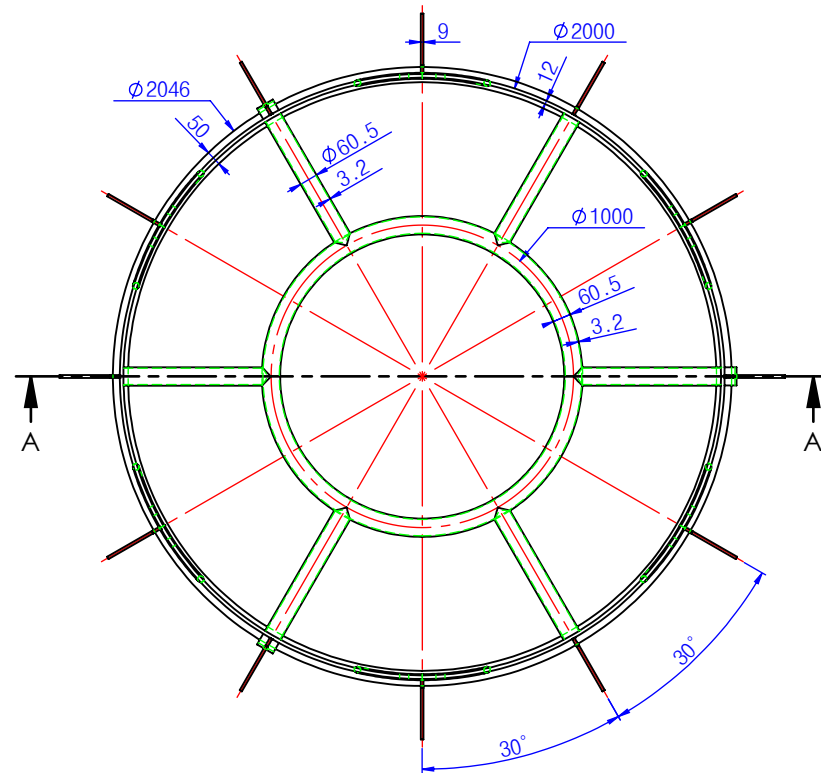
단면 A-A



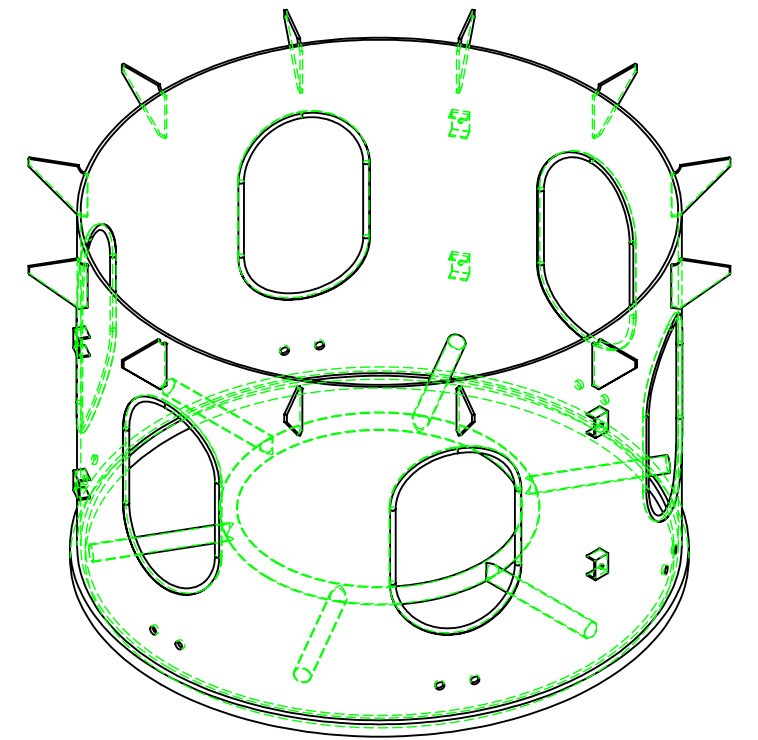
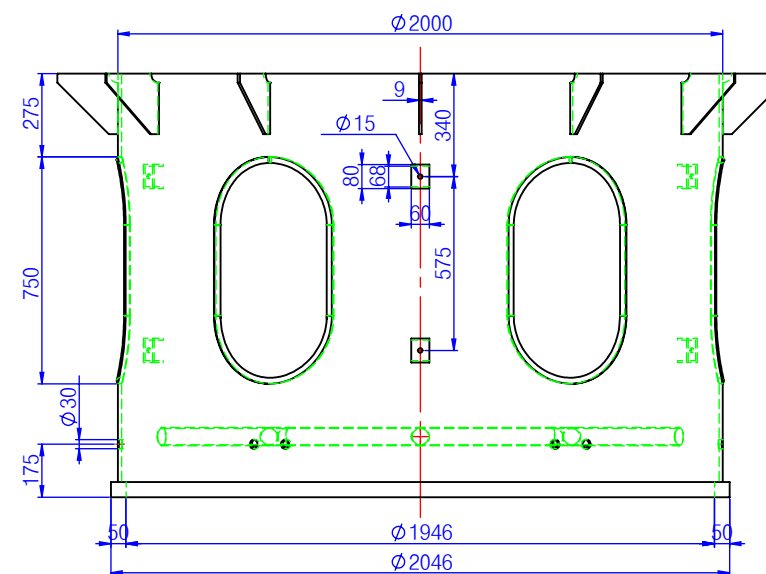
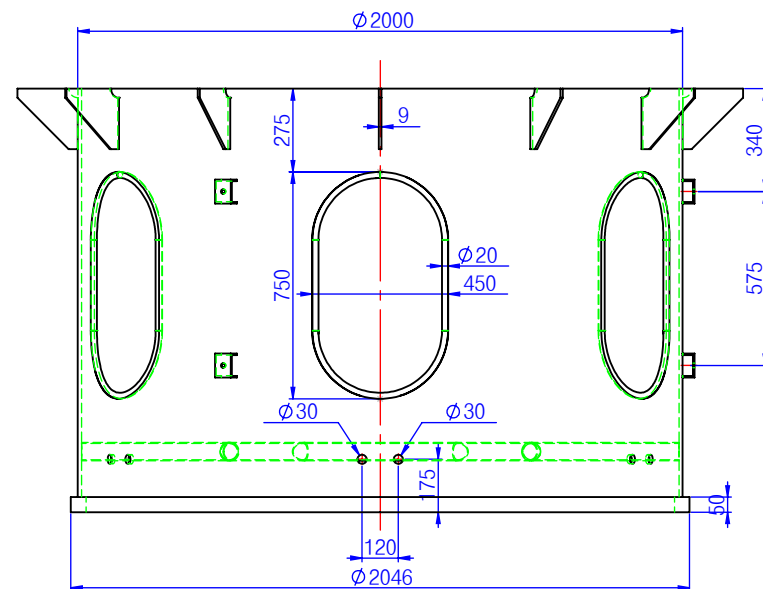
설계일자	축척	용지	모델명	도면명	도면번호
22.11	1:15	A3	-	내부 미통	3-01

등부표 상세도

(스마트 중형 등부표(1안))



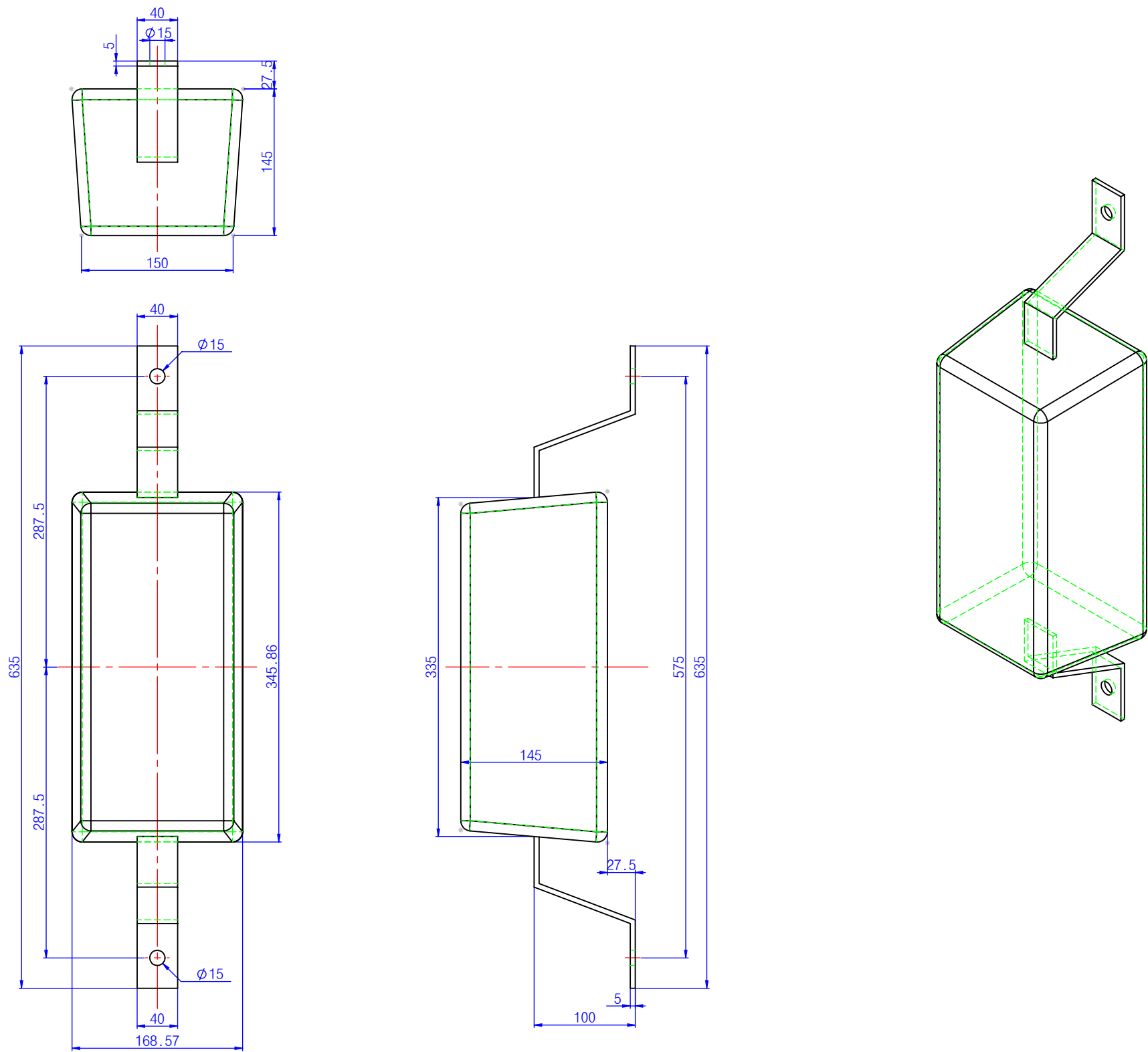
단면 A-A



설계일자	축척	용지	모델명	도면명	도면번호
22.11	1:25	A3	-	외부 미통	3-02

등부표 상세도

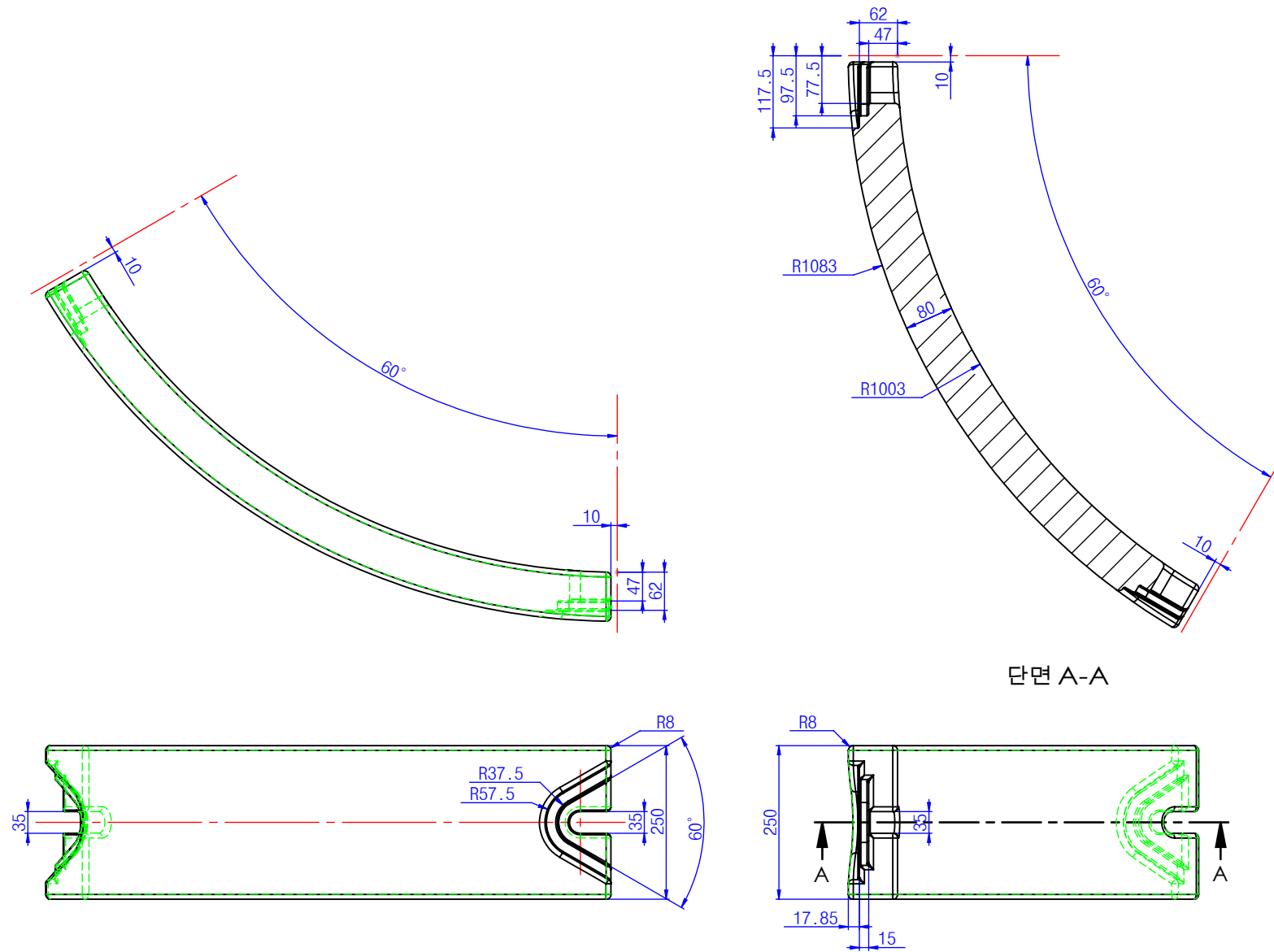
(스마트 중형 등부표(1안))



					도면명	도면번호
설계일자	축척	용지	모델명		아연판(ZINC Anode Core)	3-03
22.11	1:5	A3	-			

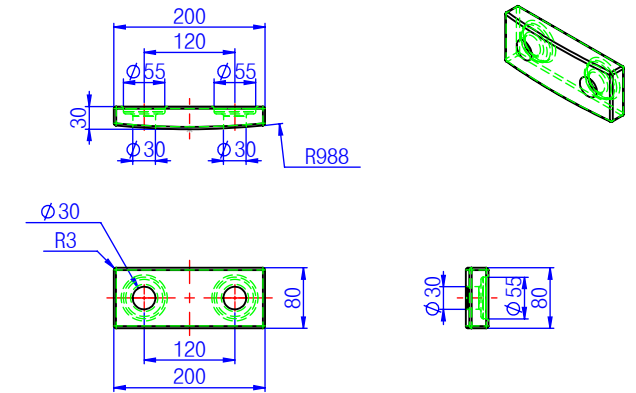
등부표 상세도

(스마트 중형 등부표(1안))

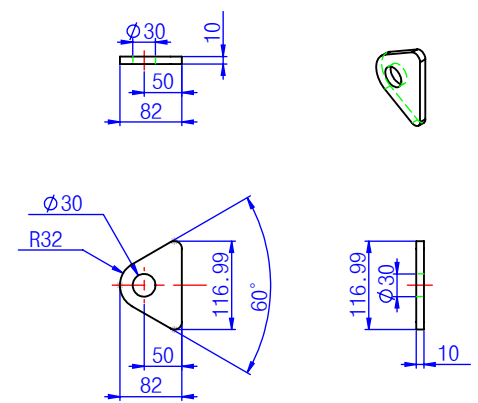


단면 A-A

3-04-a 외곽 중추



3-04-b 외곽 중추 고정블럭



3-04-c 외곽 중추 와사

설계일자	축척	용지	모델명	도면명	도면번호
22.11	1:10	A3	-	외곽 중추 외곽 중추 고정블럭 외곽 중추 와사	3-04-a 3-04-b 3-04-c